

For Research Use Only

G6PD Recombinant antibody, PBS Only

Catalog Number: 86240-1-PBS



Basic Information

Catalog Number:	86240-1-PBS	GenBank Accession Number:	BC000337	Purification Method:	Protein A purification
Concentration:	1 mg/ml	GeneID (NCBI):	2539	CloneNo.:	250831F8
Source:	Rabbit	UNIPROT ID:	P11413		
Isotype:	IgG	Full Name:	glucose-6-phosphate dehydrogenase		
Immunogen Catalog Number:	AG21862	Calculated MW:	59 kDa		
		Observed MW:	60 kDa		

Applications

Tested Applications:
WB, IF/ICC, Indirect ELISA

Species Specificity:
human, mouse

Background Information

G6PD (Glucose-6-phosphate 1-dehydrogenase) belongs to the glucose-6-phosphate dehydrogenase family. It is a housekeeping enzyme encoded in mammals by an X-linked gene. G6PD has important functions in intermediary metabolism because it catalyzes the first step in the pentose phosphate pathway and provides reductive potential in the form of NADPH. (PMID:7489710). This protein has 3 isoforms produced by alternative splicing.

Storage

Storage:
Store at -80°C.
The product is shipped with ice packs. Upon receipt, store it immediately at -80°C

Storage Buffer:
PBS only, pH7.3

For technical support and original validation data for this product please contact:

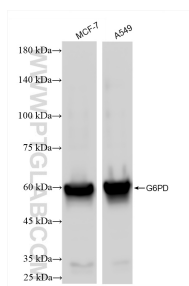
T: 4006900926

E: Proteintech-CN@ptglab.com

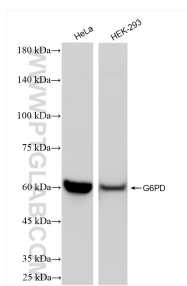
W: ptgcn.com

This product is exclusively available under Proteintech Group brand and is not available to purchase from any other manufacturer.

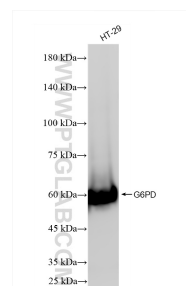
Selected Validation Data



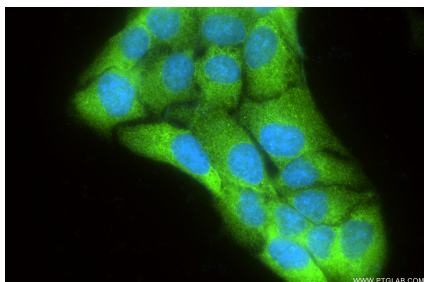
Various lysates were subjected to SDS PAGE followed by western blot with 86240-1-RR (G6PD antibody) at dilution of 1:10000 incubated at room temperature for 1.5 hours. This data was developed using the same antibody clone with 86240-1-PBS in a different storage buffer formulation.



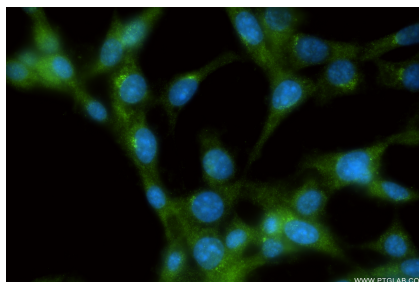
Various lysates were subjected to SDS PAGE followed by western blot with 86240-1-RR (G6PD antibody) at dilution of 1:10000 incubated at room temperature for 1.5 hours. This data was developed using the same antibody clone with 86240-1-PBS in a different storage buffer formulation.



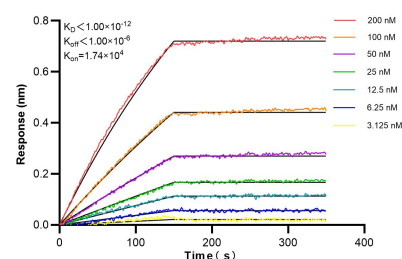
HT-29 cells were subjected to SDS PAGE followed by western blot with 86240-1-RR (G6PD antibody) at dilution of 1:10000 incubated at room temperature for 1.5 hours. This data was developed using the same antibody clone with 86240-1-PBS in a different storage buffer formulation.



Immunofluorescent analysis of (-20°C Methanol) fixed HeLa cells using G6PD antibody (86240-1-RR, Clone: 250831F8) at dilution of 1:400 and CoraLite®488-Conjugated Goat Anti-Rabbit IgG(H+L) (SA00013-2). This data was developed using the same antibody clone with 86240-1-PBS in a different storage buffer formulation.



Immunofluorescent analysis of (-20°C Methanol) fixed NIH/3T3 cells using G6PD antibody (86240-1-RR, Clone: 250831F8) at dilution of 1:400 and CoraLite®488-Conjugated Goat Anti-Rabbit IgG(H+L) (SA00013-2). This data was developed using the same antibody clone with 86240-1-PBS in a different storage buffer formulation.



Biolayer interferometry (BLI) kinetic assays of 86240-1-RR against Human G6PD were performed. The affinity constant is below 1 pM.