

For Research Use Only

# PDIA4 Recombinant antibody, PBS Only (Detector)

Catalog Number:86239-2-PBS



## Basic Information

<b>Catalog Number:</b> 86239-2-PBS	<b>GenBank Accession Number:</b> NM_004911.5	<b>Purification Method:</b> Protein A purification
<b>Concentration:</b> 1 mg/ml	<b>GeneID (NCBI):</b> 9601	<b>CloneNo.:</b> 250697G12
<b>Source:</b> Rabbit	<b>UNIPROT ID:</b> P13667	
<b>Isotype:</b> IgG	<b>Full Name:</b> protein disulfide isomerase family A, member 4	
<b>Immunogen Catalog Number:</b> EG3011	<b>Calculated MW:</b> 73 kDa	

## Applications

**Tested Applications:**  
Cytometric bead array, Indirect ELISA, Sample test

**Species Specificity:**  
human

## Background Information

### Storage

**Storage:**  
Store at -80°C.  
**The product is shipped with ice packs. Upon receipt, store it immediately at -80°C**

**Storage Buffer:**  
PBS only, pH7.3

For technical support and original validation data for this product please contact:

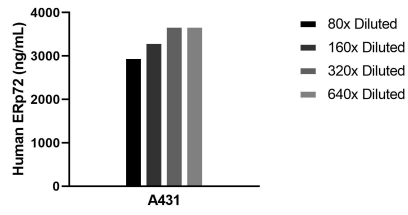
T: 4006900926

E: [Proteintech-CN@ptglab.com](mailto:Proteintech-CN@ptglab.com)

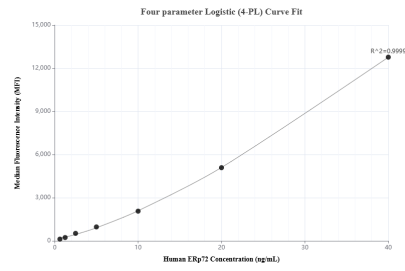
W: [ptgcn.com](http://ptgcn.com)

**This product is exclusively available under Proteintech Group brand and is not available to purchase from any other manufacturer.**

## Selected Validation Data



The mean ERp72 concentration was determined to be 3418.9 ng/mL in A431 cell extract based on a 3.7 mg/mL extract load.



Cytometric bead array standard curve of MP02383-1, ERp72 Recombinant Matched Antibody Pair, PBS Only. Capture antibody: 86239-3-PBS. Detection antibody: 86239-2-PBS. Standard: Eg3011. Range: 0.625-40 ng/mL.