

For Research Use Only

Pan-Keratin (Type I) Recombinant monoclonal antibody

Catalog Number:86238-5-RR



Basic Information

Catalog Number:

86238-5-RR

Source:

Rabbit

Isotype:

IgG

GenBank Accession Number:

GeneID (NCBI):

UNIPROT ID:

Q15323

Full Name:

Observed MW:

44-50 kDa

Purification Method:

Protein A purification

CloneNo.:

251001E5

Recommended Dilutions:

WB: 1:5000-1:50000

IHC: 1:500-1:2000

IF-P: 1:250-1:1000

Applications

Tested Applications:

WB, IHC, IF-P, ELISA

Species Specificity:

human

Note-IHC: suggested antigen retrieval with TE buffer pH 9.0; (*) Alternatively, antigen retrieval may be performed with citrate buffer pH 6.0

Positive Controls:

WB : HaCaT cells, A431 cells, HT-29 cells, MCF-7 cells

IHC : human tonsillitis tissue, human stomach cancer tissue

IF-P : human tonsil tissue,

Background Information

Keratin is a family of fibrous structural proteins that are key components in hair, nails, feathers, hooves, and the outer layer of skin (epidermis). There are two main types of keratin: Type I (acidic) and Type II (basic/neutral), which form heterodimers to create intermediate filaments, providing mechanical strength to cells. Type I keratins (or Type I cytokeratins) are acidic, low molecular weight (40-64 kDa) proteins that form Type I intermediate filaments (IFs) in the cytoplasmic cytoskeleton of all mammalian epithelial cells. They are encoded on chromosome 17q and include keratins K9-K10, K12-K28, and K31-K40.

Storage

Storage:

Store at -20°C. Stable for one year after shipment.

Storage Buffer:

PBS with 0.02% sodium azide and 50% glycerol, pH7.3

Aliquoting is unnecessary for -20°C storage

For technical support and original validation data for this product please contact:

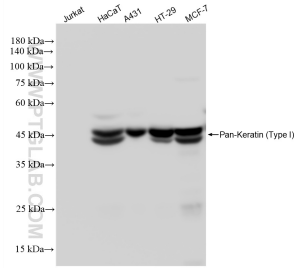
T: 4006900926

E: Proteintech-CN@ptglab.com

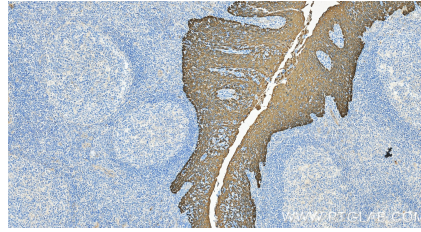
W: ptgcn.com

This product is exclusively available under Proteintech Group brand and is not available to purchase from any other manufacturer.

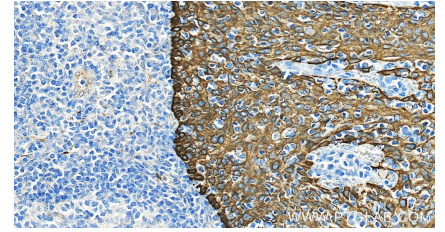
Selected Validation Data



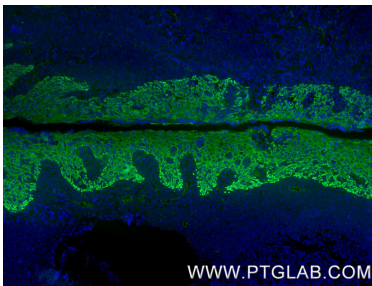
Various lysates were subjected to SDS PAGE followed by western blot with 86238-5-RR (Pan-Keratin (Type I) antibody) at dilution of 1:10000 incubated at room temperature for 1.5 hours.



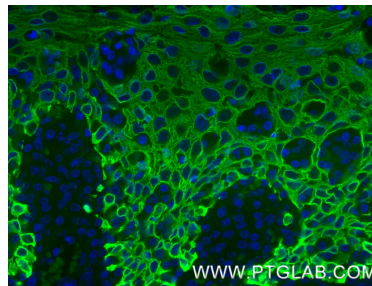
Immunohistochemical analysis of paraffin-embedded human tonsillitis tissue slide using 86238-5-RR (Pan-Keratin (Type I) antibody) at dilution of 1:1000 (under 20x lens). Heat mediated antigen retrieval with Tris-EDTA buffer (pH 9.0).



Immunohistochemical analysis of paraffin-embedded human tonsillitis tissue slide using 86238-5-RR (Pan-Keratin (Type I) antibody) at dilution of 1:1000 (under 20x lens). Heat mediated antigen retrieval with Tris-EDTA buffer (pH 9.0).



Immunofluorescent analysis of (4% PFA) fixed paraffin-embedded human tonsil tissue using Pan-Keratin (Type I) antibody (86238-5-RR, Clone: 251001E5) at dilution of 1:500 and CoraLite® 488-Conjugated Goat Anti-Rabbit IgG(H+L) (SA00013-2). Heat mediated antigen retrieval with Tris-EDTA buffer (pH 9.0).



Immunofluorescent analysis of (4% PFA) fixed paraffin-embedded human tonsil tissue using Pan-Keratin (Type I) antibody (86238-5-RR, Clone: 251001E5) at dilution of 1:500 and CoraLite® 488-Conjugated Goat Anti-Rabbit IgG(H+L) (SA00013-2). Heat mediated antigen retrieval with Tris-EDTA buffer (pH 9.0).