

For Research Use Only

# Pan-Keratin (Type I) Recombinant monoclonal antibody, PBS Only

Catalog Number:86238-5-PBS



## Basic Information

Catalog Number:

86238-5-PBS

Source:

Rabbit

Isotype:

IgG

GenBank Accession Number:

GeneID (NCBI):

UNIPROT ID:

Q15323

Full Name:

Observed MW:

44-50 kDa

Purification Method:

Protein A purification

CloneNo.:

251001E5

## Applications

Tested Applications:

WB, IHC, IF-P, Indirect ELISA

Species Specificity:

human

## Background Information

Keratin is a family of fibrous structural proteins that are key components in hair, nails, feathers, hooves, and the outer layer of skin (epidermis). There are two main types of keratin: Type I (acidic) and Type II (basic/neutral), which form heterodimers to create intermediate filaments, providing mechanical strength to cells. Type I keratins (or Type I cytokeratins) are acidic, low molecular weight (40-64 kDa) proteins that form Type I intermediate filaments (IFs) in the cytoplasmic cytoskeleton of all mammalian epithelial cells. They are encoded on chromosome 17q and include keratins K9-K10, K12-K28, and K31-K40.

## Storage

Storage:

Store at -80°C.

The product is shipped with ice packs. Upon receipt, store it immediately at -80°C

Storage Buffer:

PBS only, pH7.3

For technical support and original validation data for this product please contact:

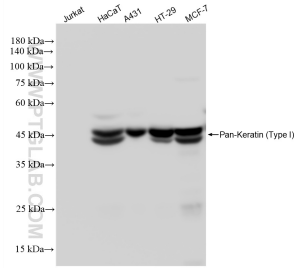
T: 4006900926

E: [Proteintech-CN@ptglab.com](mailto:Proteintech-CN@ptglab.com)

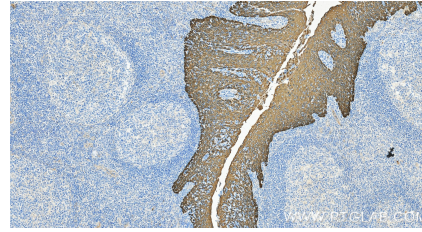
W: [ptgcn.com](http://ptgcn.com)

This product is exclusively available under Proteintech Group brand and is not available to purchase from any other manufacturer.

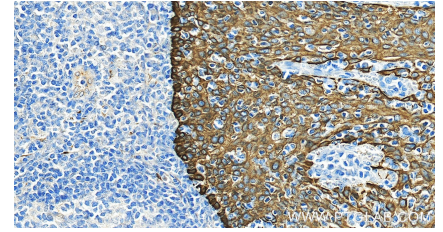
## Selected Validation Data



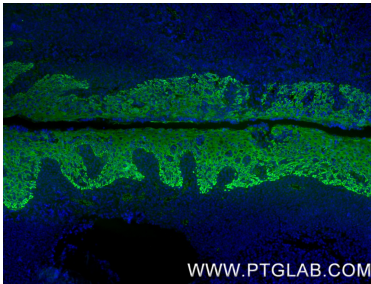
Various lysates were subjected to SDS PAGE followed by western blot with 86238-5-RR (Pan-Keratin (Type I) antibody) at dilution of 1:10000 incubated at room temperature for 1.5 hours. This data was developed using the same antibody clone with 86238-5-PBS in a different storage buffer formulation.



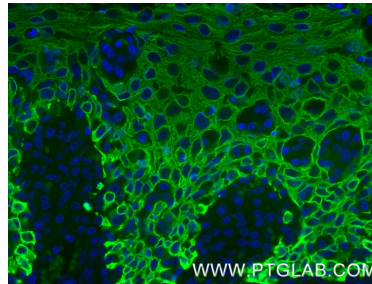
Immunohistochemical analysis of paraffin-embedded human tonsillitis tissue slide using 86238-5-RR (Pan-Keratin (Type I) antibody) at dilution of 1:1000 (under 20x lens). Heat mediated antigen retrieval with Tris-EDTA buffer (pH 9.0). This data was developed using the same antibody clone with 86238-5-PBS in a different storage buffer formulation.



Immunohistochemical analysis of paraffin-embedded human tonsillitis tissue slide using 86238-5-RR (Pan-Keratin (Type I) antibody) at dilution of 1:1000 (under 20x lens). Heat mediated antigen retrieval with Tris-EDTA buffer (pH 9.0). This data was developed using the same antibody clone with 86238-5-PBS in a different storage buffer formulation.



Immunofluorescent analysis of (4% PFA) fixed paraffin-embedded human tonsil tissue using Pan-Keratin (Type I) antibody (86238-5-RR, Clone: 251001E5) at dilution of 1:500 and CoraLite® 488-Conjugated Goat Anti-Rabbit IgG(H+L) (SA00013-2). Heat mediated antigen retrieval with Tris-EDTA buffer (pH 9.0). This data was developed using the same antibody clone with 86238-5-PBS in a different storage buffer formulation.



Immunofluorescent analysis of (4% PFA) fixed paraffin-embedded human tonsil tissue using Pan-Keratin (Type I) antibody (86238-5-RR, Clone: 251001E5) at dilution of 1:500 and CoraLite® 488-Conjugated Goat Anti-Rabbit IgG(H+L) (SA00013-2). Heat mediated antigen retrieval with Tris-EDTA buffer (pH 9.0). This data was developed using the same antibody clone with 86238-5-PBS in a different storage buffer formulation.