

For Research Use Only

PSMC1 Recombinant antibody

Catalog Number: 86237-1-RR



Basic Information

Catalog Number:

86237-1-RR

Concentration:

1000 μ g/ml

Source:

Rabbit

Isotype:

IgG

Immunogen Catalog Number:

AG1677

GenBank Accession Number:

BC016368

GeneID (NCBI):

5700

UNIPROT ID:

P62191

Full Name:

proteasome (prosome, macropain)

26S subunit, ATPase, 1

Calculated MW:

49 kDa

Observed MW:

52-60 kDa

Purification Method:

Protein A purification

CloneNo.:

251014B9

Recommended Dilutions:

WB: 1:5000-1:50000

IHC: 1:500-1:2000

IF/ICC: 1:50-1:500

Applications

Tested Applications:

WB, IHC, IF/ICC, ELISA

Species Specificity:

human, mouse, rat

Note-IHC: suggested antigen retrieval with *TE buffer pH 9.0*; (*) Alternatively, antigen retrieval may be performed with *citrate buffer pH 6.0*

Positive Controls:

WB: A549 cells, HeLa cells, Jurkat cells, NIH/3T3 cells, mouse brain tissue, mouse lung tissue, rat brain tissue

IHC: mouse cerebellum tissue,

IF/ICC: Jurkat cells,

Background Information

Storage

Storage:

Store at -20°C. Stable for one year after shipment.

Storage Buffer:

PBS with 0.02% sodium azide and 50% glycerol, pH7.3

Aliquoting is unnecessary for -20°C storage

For technical support and original validation data for this product please contact:

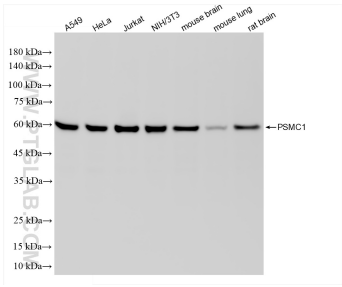
T: 4006900926

E: Proteintech-CN@ptglab.com

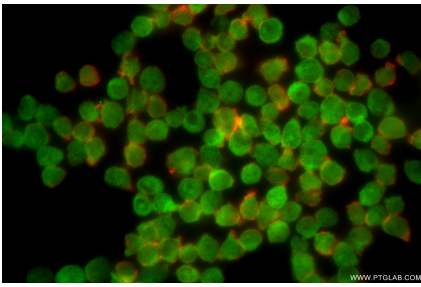
W: ptgcn.com

This product is exclusively available under Proteintech Group brand and is not available to purchase from any other manufacturer.

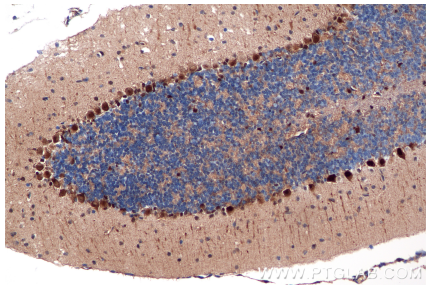
Selected Validation Data



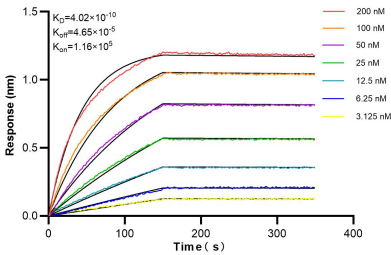
Various lysates were subjected to SDS PAGE followed by western blot with 86237-1-RR (PSMC1 antibody) at dilution of 1:10000 incubated at room temperature for 1.5 hours.



Immunofluorescent analysis of (4% PFA) fixed Jurkat cells using PSMC1 antibody (86237-1-RR, Clone: 251014B9) at dilution of 1:200 and CoraLite®488-Conjugated Goat Anti-Rabbit IgG(H+L) (SA00013-2), CL594-Phalloidin (red).



Immunohistochemical analysis of paraffin-embedded mouse cerebellum tissue slide using 86237-1-RR (PSMC1 antibody) at dilution of 1:1000 (under 20x lens). Heat mediated antigen retrieval with Tris-EDTA buffer (pH 9.0).



Biolayer interferometry (BLI) kinetic assays of 86237-1-RR against Human PSMC1 were performed. The affinity constant is 0.402 nM.