

For Research Use Only

# A2ML1 Recombinant antibody, PBS Only (Detector)

Catalog Number: 86234-2-PBS



## Basic Information

|  |  |   |
|--|--|---|
| <b>Catalog Number:</b><br>86234-2-PBS      | <b>GenBank Accession Number:</b><br>GeneID (NCBI):<br>144568 | <b>Purification Method:</b><br>Protein A purification |
| <b>Concentration:</b><br>1 mg/ml           | <b>UNIPROT ID:</b><br>A8K2U0                                 | <b>CloneNo.:</b><br>250995B1                          |
| <b>Source:</b><br>Rabbit                   | <b>Full Name:</b><br>alpha-2-macroglobulin-like 1            |   |
| <b>Isotype:</b><br>IgG                     | <b>Calculated MW:</b><br>161 kDa                             |   |
| <b>Immunogen Catalog Number:</b><br>EG4523 |  |   |

## Applications

**Tested Applications:**  
Cytometric bead array, Indirect ELISA, Sample test

**Species Specificity:**  
human

## Background Information

### Storage

**Storage:**  
Store at -80°C.  
**The product is shipped with ice packs. Upon receipt, store it immediately at -80°C**

**Storage Buffer:**  
PBS only, pH7.3

For technical support and original validation data for this product please contact:

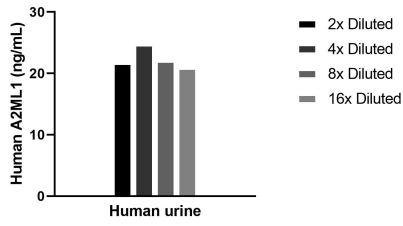
T: 4006900926

E: [Proteintech-CN@ptglab.com](mailto:Proteintech-CN@ptglab.com)

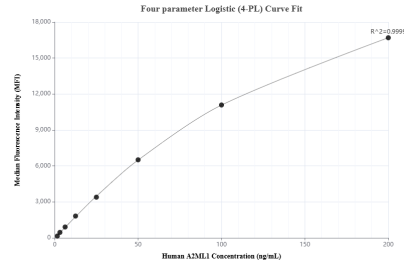
W: [ptgcn.com](http://ptgcn.com)

**This product is exclusively available under Proteintech Group brand and is not available to purchase from any other manufacturer.**

## Selected Validation Data



The mean A2ML1 concentration was determined to be 22.3 ng/mL in human urine.



Cytometric bead array standard curve of MP02375-1, A2ML1 Recombinant Matched Antibody Pair, PBS Only. Capture antibody: 86234-3-PBS. Detection antibody: 86234-2-PBS. Standard: Eg4523. Range: 1.562-200 ng/mL