

For Research Use Only

# Mouse Olr1 Recombinant monoclonal antibody, PBS Only (Capture)

Catalog Number:86230-2-PBS



## Basic Information

<b>Catalog Number:</b> 86230-2-PBS	<b>GenBank Accession Number:</b> NM_138648.2	<b>Purification Method:</b> Protein A purification
<b>Source:</b> Rabbit	<b>GeneID (NCBI):</b> 108078	<b>CloneNo.:</b> 250111E7
<b>Isotype:</b> IgG	<b>UNIPROT ID:</b> Q9EQ09	
<b>Immunogen Catalog Number:</b> EG2473	<b>Full Name:</b> oxidized low density lipoprotein (lectin-like) receptor 1	
	<b>Calculated MW:</b> 42 kDa	

## Applications

**Tested Applications:**  
Cytometric bead array, Sandwich ELISA, Indirect ELISA

**Species Specificity:**  
mouse

## Background Information

### Storage

**Storage:**  
Store at -80°C.  
**The product is shipped with ice packs. Upon receipt, store it immediately at -80°C**

**Storage Buffer:**  
PBS only, pH7.3

For technical support and original validation data for this product please contact:

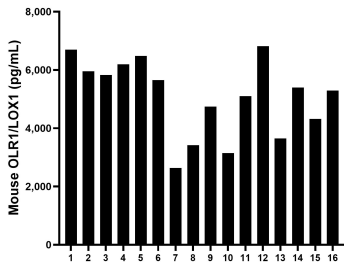
T: 4006900926

E: [Proteintech-CN@ptglab.com](mailto:Proteintech-CN@ptglab.com)

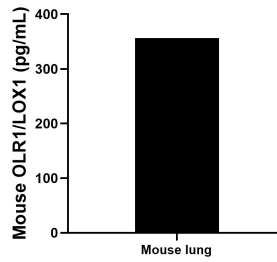
W: [ptgcn.com](http://ptgcn.com)

**This product is exclusively available under Proteintech Group brand and is not available to purchase from any other manufacturer.**

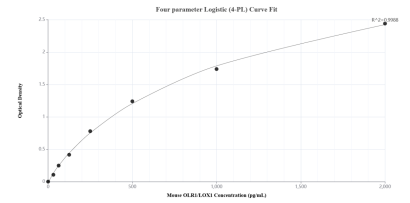
## Selected Validation Data



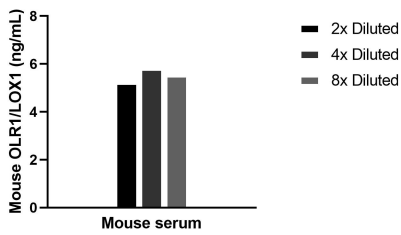
Serum of sixteen mice was measured. The OLR1/LOX1 concentration of detected samples was determined to be 5,082.6 pg/mL with a range of 2,635.3-6,814.9 pg/mL.



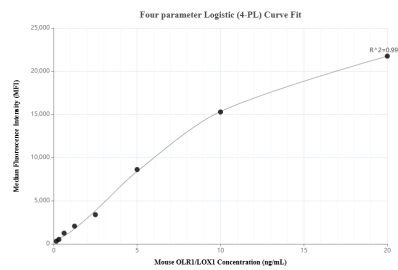
Mouse lung, cut into 1-2 mm pieces, was cultured in RPMI supplemented with 10% fetal bovine serum. An aliquot of the cell culture supernatant was removed, assayed for mouse OLR1/LOX1 and measured 356.4 pg/mL.



Sandwich ELISA standard curve of MP02348-1, Mouse OLR1/LOX1 Recombinant Matched Antibody Pair - PBS only. 86230-2-PBS was coated to a plate as the capture antibody and incubated with serial dilutions of standard Eg2473. 86230-1-PBS was HRP conjugated as the detection antibody. Range: 31.3-2000 pg/mL.



The mean OLR1/LOX1 concentration was determined to be 5.5 ng/mL in mouse serum.



Cytometric bead array standard curve of MP02348-1, MOUSE OLR1/LOX1 Recombinant Matched Antibody Pair, PBS Only. Capture antibody: 86230-2-PBS. Detection antibody: 86230-1-PBS. Standard: Eg2473. Range: 0.156-20 ng/mL.