

For Research Use Only

# Mouse JAM-A/CD321 Recombinant antibody, PBS Only

Catalog Number: 86229-1-PBS



## Basic Information

Catalog Number: 86229-1-PBS	GenBank Accession Number: NM_172647.2	Purification Method: Protein A purification
Concentration: 1 mg/ml	GeneID (NCBI): 16456	CloneNo.: 250060H5
Source: Rabbit	UNIPROT ID: O88792	
Isotype: IgG	Full Name: F11 receptor	
Immunogen Catalog Number: EG3117	Calculated MW: 32 kDa	
	Observed MW: 33 kDa	

## Applications

Tested Applications:  
WB, IF/ICC, Indirect ELISA

Species Specificity:  
mouse, rat

## Background Information

Junctional Adhesion Molecule-A (JAM-A), also known as CD321 or F11R, is a transmembrane glycoprotein belonging to the immunoglobulin superfamily. It is primarily located in the tight junctions of epithelial and endothelial cells and is also expressed on circulating platelets and leukocytes (PMID: 34533648). Targeting F11R/JAM-A with monoclonal antibodies or peptide antagonists has shown promise in inhibiting tumor growth and metastasis in mouse models (PMID: 37563645).

## Storage

Storage:  
Store at -80°C.

The product is shipped with ice packs. Upon receipt, store it immediately at -80°C

Storage Buffer:  
PBS only, pH7.3

For technical support and original validation data for this product please contact:

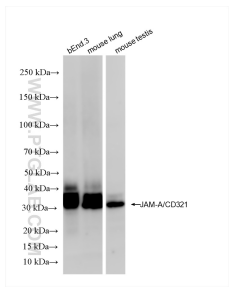
T: 4006900926

E: Proteintech-CN@ptglab.com

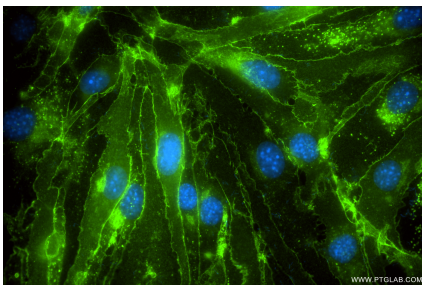
W: ptgcn.com

This product is exclusively available under Proteintech Group brand and is not available to purchase from any other manufacturer.

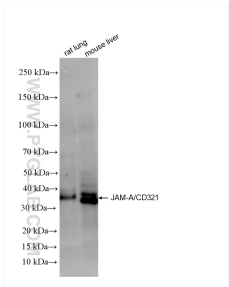
## Selected Validation Data



Various lysates were subjected to SDS PAGE followed by western blot with 86229-1-RR (F11r(CD321) antibody) at dilution of 1:4000 incubated at room temperature for 1.5 hours. This data was developed using the same antibody clone with 86229-1-PBS in a different storage buffer formulation.



Immunofluorescent analysis of (4% PFA) fixed bEnd.3 cells using JAM-A/CD321 antibody (86229-1-RR, Clone: 250060H5 ) at dilution of 1:800 and CoraLite®488-Conjugated Goat Anti-Rabbit IgG(H+L) (SA00013-2). This data was developed using the same antibody clone with 86229-1-PBS in a different storage buffer formulation.



Various lysates were subjected to SDS PAGE followed by western blot with 86229-1-RR (F11r(CD321) antibody) at dilution of 1:4000 incubated at room temperature for 1.5 hours. This data was developed using the same antibody clone with 86229-1-PBS in a different storage buffer formulation.