

For Research Use Only

PSMC2 Recombinant antibody, PBS Only (Capture)

Catalog Number: 86228-2-PBS



Basic Information

Catalog Number: 86228-2-PBS	GenBank Accession Number: BC002589	Purification Method: Protein A purification
Concentration: 1 mg/ml	GeneID (NCBI): 5701	CloneNo.: 250914D9
Source: Rabbit	UNIPROT ID: P35998	
Isotype: IgG	Full Name: proteasome (prosome, macropain) 26S subunit, ATPase, 2	
Immunogen Catalog Number: AG6700	Calculated MW: 49 kDa	

Applications

Tested Applications:
Cytometric bead array, Indirect ELISA, Sample test

Species Specificity:
human

Background Information

Storage

Storage:
Store at -80°C.
The product is shipped with ice packs. Upon receipt, store it immediately at -80°C

Storage Buffer:
PBS only, pH7.3

For technical support and original validation data for this product please contact:

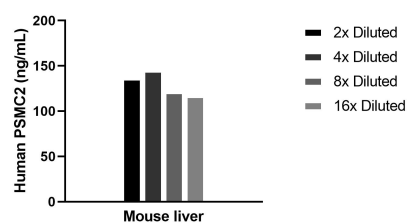
T: 4006900926

E: Proteintech-CN@ptglab.com

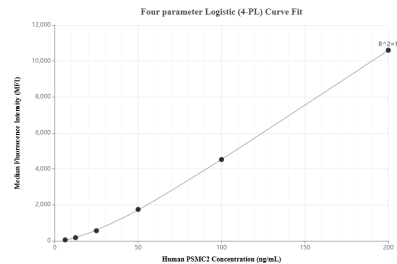
W: ptgcn.com

This product is exclusively available under Proteintech Group brand and is not available to purchase from any other manufacturer.

Selected Validation Data



The mean PSMC2 concentration was determined to be 129.4 ng/mL in Mouse liver tissue extract based on a 8.4 mg/mL extract load.



Cytometric bead array standard curve of MP02349-1, PSMC2 Recombinant Matched Antibody Pair, PBS Only. Capture antibody: 86228-2-PBS. Detection antibody: 86228-1-PBS. Standard: Ag6700. Range: 6.25-200 ng/mL.