

For Research Use Only

# NEK1 Recombinant antibody, PBS Only (Detector)

Catalog Number:86224-1-PBS



## Basic Information

<b>Catalog Number:</b> 86224-1-PBS	<b>GenBank Accession Number:</b> BC114491	<b>Purification Method:</b> Protein A purification
<b>Concentration:</b> 1 mg/ml	<b>GeneID (NCBI):</b> 4750	<b>CloneNo.:</b> 250128F4
<b>Source:</b> Rabbit	<b>UNIPROT ID:</b> Q96PY6	
<b>Isotype:</b> IgG	<b>Full Name:</b> NIMA (never in mitosis gene a)-related kinase 1	
<b>Immunogen Catalog Number:</b> AG25970	<b>Calculated MW:</b> 1258 aa, 143 kDa	

## Applications

**Tested Applications:**  
Sandwich ELISA, Indirect ELISA, Sample test

**Species Specificity:**  
human

## Background Information

### Storage

**Storage:**  
Store at -80°C.  
**The product is shipped with ice packs. Upon receipt, store it immediately at -80°C**

**Storage Buffer:**  
PBS only, pH7.3

For technical support and original validation data for this product please contact:

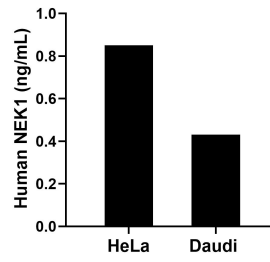
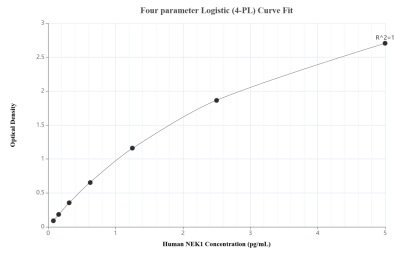
T: 4006900926

E: [Proteintech-CN@ptglab.com](mailto:Proteintech-CN@ptglab.com)

W: [ptgcn.com](http://ptgcn.com)

**This product is exclusively available under Proteintech Group brand and is not available to purchase from any other manufacturer.**

## Selected Validation Data



Sandwich ELISA standard curve of MP02331-1, Human NEK1 Recombinant Matched Antibody Pair - PBS only. 86224-2-PBS was coated to a plate as the capture antibody and incubated with serial dilutions of standard Ag25970. 86224-1-PBS was HRP conjugated as the detection antibody. Range: 78.1-5000 pg/mL

The mean NEK1 concentration was determined to be 0.85 ng/mL in HeLa cell extract based on a 1.30 mg/mL extract load and 0.43 ng/mL in Daudi cell extract based on a 1.8 mg/mL extract load.