

For Research Use Only

# Rat CXCL7/PPBP Recombinant monoclonal antibody, PBS Only (Capture)

Catalog Number: 86222-2-PBS



## Basic Information

<b>Catalog Number:</b> 86222-2-PBS	<b>GenBank Accession Number:</b> NM_153721.1	<b>Purification Method:</b> Protein A purification
<b>Source:</b> Rabbit	<b>GeneID (NCBI):</b> 246358	<b>CloneNo.:</b> 250049C3
<b>Isotype:</b> IgG	<b>UNIPROT ID:</b> Q99ME0	
<b>Immunogen Catalog Number:</b> EG3405	<b>Full Name:</b> pro-platelet basic protein (chemokine (C-X-C motif) ligand 7)	
	<b>Calculated MW:</b> 12 kDa	

## Applications

**Tested Applications:**  
Sandwich ELISA, Indirect ELISA

**Species Specificity:**  
rat

## Background Information

### Storage

**Storage:**  
Store at -80°C.  
**The product is shipped with ice packs. Upon receipt, store it immediately at -80°C**

**Storage Buffer:**  
PBS only, pH7.3

For technical support and original validation data for this product please contact:

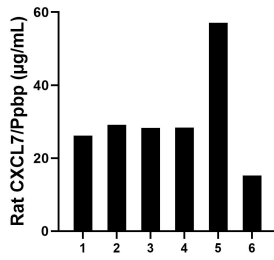
T: 4006900926

E: [Proteintech-CN@ptglab.com](mailto:Proteintech-CN@ptglab.com)

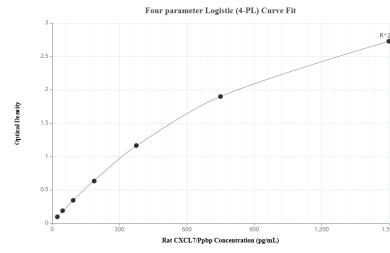
W: [ptgcn.com](http://ptgcn.com)

**This product is exclusively available under Proteintech Group brand and is not available to purchase from any other manufacturer.**

## Selected Validation Data



Serum of six rats was measured. The rat CXCL7/Ppbp concentration of detected samples was determined to be 30.70 µg/mL with a range of 15.27 - 57.05 µg/mL.



Sandwich ELISA standard curve of MP02338-1, Rat CXCL7/Ppbp Recombinant Matched Antibody Pair - PBS only. 86222-2-PBS was coated to a plate as the capture antibody and incubated with serial dilutions of standard Eg3405. 86222-1-PBS was HRP conjugated as the detection antibody. Range: 23.4-1500 pg/mL.