

For Research Use Only

# ATP5I Recombinant antibody, PBS Only (Capture)

Catalog Number: 86218-2-PBS



## Basic Information

Catalog Number:

86218-2-PBS

Concentration:

1 mg/ml

Source:

Rabbit

Isotype:

IgG

Immunogen Catalog Number:

AG9605

GenBank Accession Number:

BC003679

GeneID (NCBI):

521

UNIPROT ID:

P56385

Full Name:

ATP synthase, H<sup>+</sup> transporting, mitochondrial F<sub>0</sub> complex, subunit E

Calculated MW:

69 aa, 8 kDa

Purification Method:

Protein A purification

CloneNo.:

250815C6

## Applications

Tested Applications:

Cytometric bead array, Indirect ELISA, Sample test

Species Specificity:

human

## Background Information

### Storage

Storage:

Store at -80°C.

**The product is shipped with ice packs. Upon receipt, store it immediately at -80°C**

Storage Buffer:

PBS only, pH7.3

For technical support and original validation data for this product please contact:

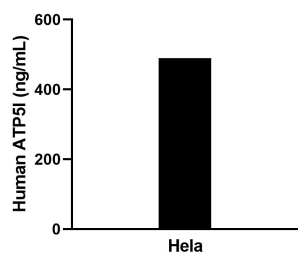
T: 4006900926

E: [Proteintech-CN@ptglab.com](mailto:Proteintech-CN@ptglab.com)

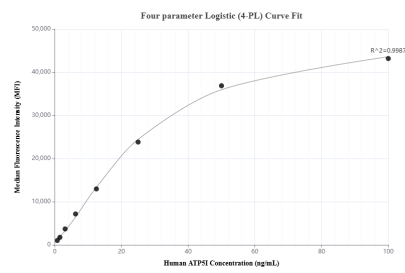
W: [ptgcn.com](http://ptgcn.com)

**This product is exclusively available under Proteintech Group brand and is not available to purchase from any other manufacturer.**

## Selected Validation Data



The mean ATP5I concentration was determined to be 495.7 ng/mL in HeLa cell extract based on a 0.9 mg/mL extract load.



Cytometric bead array standard curve of MP02299-1, ATP5I Recombinant Matched Antibody Pair, PBS Only. Capture antibody: 86218-2-PBS. Detection antibody: 86218-1-PBS. Standard: Ag9605. Range: 0.781-100 ng/mL.