

For Research Use Only

STK25 Recombinant antibody, PBS Only (Detector)

Catalog Number: 86216-1-PBS



Basic Information

Catalog Number:

86216-1-PBS

Concentration:

1 mg/ml

Source:

Rabbit

Isotype:

IgG

Immunogen Catalog Number:

AG22964

GenBank Accession Number:

BC015793

GeneID (NCBI):

10494

UNIPROT ID:

O00506

Full Name:

serine/threonine kinase 25 (STE20 homolog, yeast)

Calculated MW:

48 kDa

Observed MW:

48 kDa

Purification Method:

Protein A purification

CloneNo.:

250202A6

Applications

Tested Applications:

WB, Sandwich ELISA, Indirect ELISA, Sample test

Species Specificity:

human, mouse, rat

Background Information

Storage

Storage:

Store at -80°C.

The product is shipped with ice packs. Upon receipt, store it immediately at -80°C

Storage Buffer:

PBS only, pH7.3

For technical support and original validation data for this product please contact:

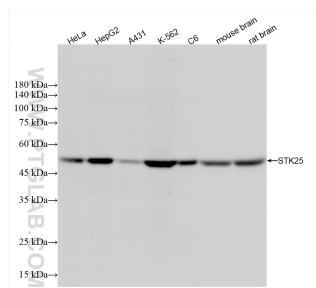
T: 4006900926

E: Proteintech-CN@ptglab.com

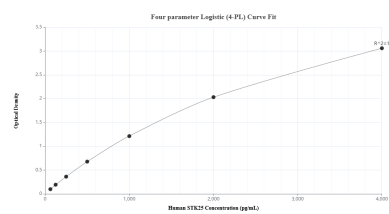
W: ptgcn.com

This product is exclusively available under Proteintech Group brand and is not available to purchase from any other manufacturer.

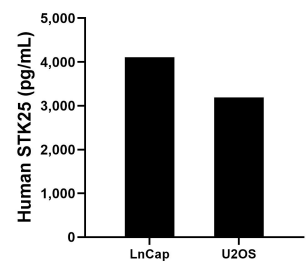
Selected Validation Data



Various lysates were subjected to SDS PAGE followed by western blot with 86216-1-RR (STK25 antibody) at dilution of 1:3000 incubated at room temperature for 1.5 hours. This data was developed using the same antibody clone with 86216-1-PBS in a different storage buffer formulation.



Sandwich ELISA standard curve of MP02398-1, Human STK25 Recombinant Matched Antibody Pair - PBS only. 86216-2-PBS was coated to a plate as the capture antibody and incubated with serial dilutions of standard Ag22964. 86216-1-PBS was HRP conjugated as the detection antibody. Range: 62.5-4000 pg/mL



The mean SNAI2/SLUG concentration was determined to be 4,108.0 pg/mL in LnCap cell extract based on a 2.0 mg/mL extract load and 3,191.3 pg/mL in U2OS cell extract based on a 2.2 mg/mL extract load.