

For Research Use Only

# SCF Recombinant antibody

Catalog Number: 86214-1-RR



## Basic Information

Catalog Number:

86214-1-RR

Concentration:

1000 µg/ml

Source:

Rabbit

Isotype:

IgG

Immunogen Catalog Number:

EG0402

GenBank Accession Number:

NM\_013598

GeneID (NCBI):

17311

UNIPROT ID:

P20826-1

Full Name:

kit ligand

Calculated MW:

31KD

Observed MW:

31 kDa

Purification Method:

Protein A purification

CloneNo.:

250022H6

Recommended Dilutions:

WB: 1:500-1:2000

## Applications

Tested Applications:

WB, ELISA

Species Specificity:

mouse, rat

Positive Controls:

WB : NIH/3T3 cells, Recombinant protein, PC-12 cells,  
mouse bone marrow tissue, mouse colon tissue

## Background Information

Stem cell factor (SCF) is also named as mast cell growth factor (MGF), Kit ligand (Kitl), c-Kit ligand, steel factor and Kitlg. SCF is a pleiotropic cytokine (also as a dimeric molecule) that mediates regulatory effects on inflammation, tissue remodeling, and fibrosis through binding to and activating its receptor tyrosine kinase c-Kit (PMID: 1698553, PMID: 8630386, PMID: 23073628). SCF is the ligand of c-Kit, a member of the RTKs family. Molecular activity of RTKs is a primary stimulus of cell motility, and expression of the SCF/c-Kit axis is associated with cell migration (PMID: 28629522). SCF is a cytokine that synergizes the effects of Epo during erythropoiesis. Stem cell factor plays a well-described role in regulating the survival, proliferation, migration, and differentiation of hematopoietic progenitors, melanocytes, and germ cells (PMID: 36688460). More recent studies have demonstrated SCF expression in dermal and intestinal epithelial cells, and increased SCF expression has been reported in the inflamed mucosa of individuals with IBD and colonitis (PMID: 18200049, PMID: 30157426).

## Storage

Storage:

Store at -20°C. Stable for one year after shipment.

Storage Buffer:

PBS with 0.02% sodium azide and 50% glycerol, pH7.3

Aliquoting is unnecessary for -20°C storage

For technical support and original validation data for this product please contact:

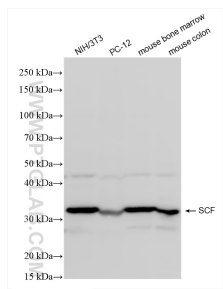
T: 4006900926

E: Proteintech-CN@ptglab.com

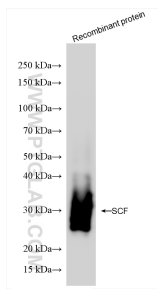
W: ptgcn.com

This product is exclusively available under Proteintech Group brand and is not available to purchase from any other manufacturer.

## Selected Validation Data



Various lysates were subjected to SDS PAGE followed by western blot with 86214-1-RR (SCF antibody) at dilution of 1:1000 incubated at room temperature for 1.5 hours.



Recombinant protein were subjected to SDS PAGE followed by western blot with 86214-1-RR (SCF antibody) at dilution of 1:1000 incubated at room temperature for 1.5 hours.