

For Research Use Only

Mouse SCF Recombinant antibody, PBS Only

Catalog Number:86214-1-PBS



Basic Information

Catalog Number: 86214-1-PBS	GenBank Accession Number: NM_013598	Purification Method: Protein A purification
Concentration: 1 mg/ml	GeneID (NCBI): 17311	CloneNo.: 250022H6
Source: Rabbit	UNIPROT ID: P20826-1	
Isotype: IgG	Full Name: kit ligand	
Immunogen Catalog Number: EG0402	Calculated MW: 31KD	
	Observed MW: 31 kDa	

Applications

Tested Applications:
WB, Indirect ELISA

Species Specificity:
mouse, rat

Background Information

Stem cell factor (SCF) is also named as mast cell growth factor (MGF), Kit ligand (Kitl), c-Kit ligand, steel factor and Kitlg. SCF is a pleiotropic cytokine (also as a dimeric molecule) that mediates regulatory effects on inflammation, tissue remodeling, and fibrosis through binding to and activating its receptor tyrosine kinase c-Kit (PMID: 1698553, PMID: 8630386, PMID: 23073628). SCF is the ligand of c-Kit, a member of the RTKs family. Molecular activity of RTKs is a primary stimulus of cell motility, and expression of the SCF/c-Kit axis is associated with cell migration (PMID: 28629522). SCF is a cytokine that synergizes the effects of Epo during erythropoiesis. Stem cell factor plays a well-described role in regulating the survival, proliferation, migration, and differentiation of hematopoietic progenitors, melanocytes, and germ cells (PMID: 36688460). More recent studies have demonstrated SCF expression in dermal and intestinal epithelial cells, and increased SCF expression has been reported in the inflamed mucosa of individuals with IBD and colonitis (PMID: 18200049, PMID: 30157426).

Storage

Storage:
Store at -80°C.
The product is shipped with ice packs. Upon receipt, store it immediately at -80°C

Storage Buffer:
PBS only, pH7.3

For technical support and original validation data for this product please contact:

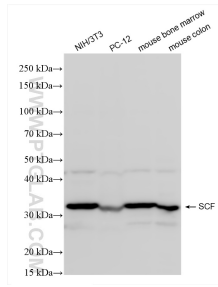
T: 4006900926

E: Proteintech-CN@ptglab.com

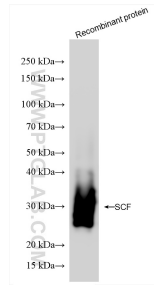
W: ptgcn.com

This product is exclusively available under Proteintech Group brand and is not available to purchase from any other manufacturer.

Selected Validation Data



Various lysates were subjected to SDS PAGE followed by western blot with 86214-1-RR (SCF antibody) at dilution of 1:1000 incubated at room temperature for 1.5 hours. This data was developed using the same antibody clone with 86214-1-PBS in a different storage buffer formulation.



Recombinant protein were subjected to SDS PAGE followed by western blot with 86214-1-RR (SCF antibody) at dilution of 1:1000 incubated at room temperature for 1.5 hours. This data was developed using the same antibody clone with 86214-1-PBS in a different storage buffer formulation.