

For Research Use Only

# CD25/IL-2R alpha Recombinant antibody

Catalog Number: 86213-1-RR



## Basic Information

<b>Catalog Number:</b> 86213-1-RR	<b>GenBank Accession Number:</b> NM_013163.1	<b>Purification Method:</b> Protein A purification
<b>Concentration:</b> 1000 µg/ml	<b>GeneID (NCBI):</b> 25704	<b>CloneNo.:</b> 250670H3
<b>Source:</b> Rabbit	<b>UNIPROT ID:</b> P26897	<b>Recommended Dilutions:</b> WB: 1:2000-1:10000
<b>Isotype:</b> IgG	<b>Full Name:</b> interleukin 2 receptor, alpha	
<b>Immunogen Catalog Number:</b> EG1453	<b>Calculated MW:</b> 31kDa	
	<b>Observed MW:</b> 55-60 kDa	

## Applications

<b>Tested Applications:</b> WB, ELISA	<b>Positive Controls:</b> WB : CTLL-2 cells, Recombinant protein
<b>Species Specificity:</b> mouse, rat	

## Background Information

Proliferation of T lymphocytes is triggered by the interaction of IL-2 with its specific receptor following T lymphocyte activation. The receptor for IL-2 has three forms, generated by different combinations of three different proteins, the alpha chain (IL-2R alpha), the beta chain (IL-2R beta), and the gamma chain (IL-2R gamma) (PMID: 8476561). IL-2R alpha (also known as CD25) is a type I transmembrane protein present on activated T cells, activated B cells, some thymocytes, myeloid precursors, and oligodendrocytes. CD25 is also found on natural CD4+ Foxp3+ Treg cells (PMID: 22585674).

## Storage

**Storage:**  
Store at -20°C. Stable for one year after shipment.  
**Storage Buffer:**  
PBS with 0.02% sodium azide and 50% glycerol, pH7.3  
Aliquoting is unnecessary for -20°C storage

For technical support and original validation data for this product please contact:

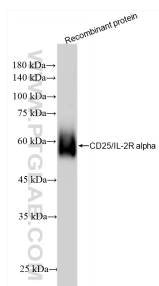
T: 4006900926

E: Proteintech-CN@ptglab.com

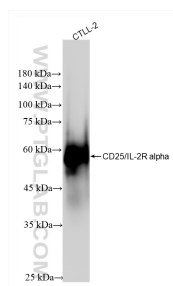
W: ptgcn.com

This product is exclusively available under Proteintech Group brand and is not available to purchase from any other manufacturer.

## Selected Validation Data



Recombinant protein were subjected to SDS PAGE followed by western blot with 86213-1-RR (CD25/IL-2R alpha antibody) at dilution of 1:5000 incubated at room temperature for 1.5 hours.



CTLL-2 cells were subjected to SDS PAGE followed by western blot with 86213-1-RR (CD25/IL-2R alpha antibody) at dilution of 1:5000 incubated at room temperature for 1.5 hours.