

For Research Use Only

PGM2L1 Recombinant antibody

Catalog Number: 86209-1-RR



Basic Information

Catalog Number:

86209-1-RR

Concentration:

1000 µg/ml

Source:

Rabbit

Isotype:

IgG

Immunogen Catalog Number:

AG5019

GenBank Accession Number:

BC059360

GeneID (NCBI):

283209

UNIPROT ID:

Q6PCE3

Full Name:

phosphoglucomutase 2-like 1

Calculated MW:

70 kDa

Observed MW:

70 kDa

Purification Method:

Protein A purification

CloneNo.:

250849G1

Recommended Dilutions:

WB: 1:1000-1:6000

Applications

Tested Applications:

WB, ELISA

Species Specificity:

human, mouse, rat

Positive Controls:

WB : Jurkat cells, U-251 cells, A549 cells, mouse brain tissue, rat brain tissue, mouse cerebellum tissue, rat cerebellum tissue

Background Information

PGM2L1 (Phosphoglucomutase 2 Like 1) is an enzyme-like protein involved in carbohydrate metabolism. PGM2L1 catalyzes the formation of G16BP by using the glycolytic intermediate 1,3-bisphosphoglycerate as a phosphate donor and glucose-1-phosphate or glucose-6-phosphate as a phosphate acceptor. PGM2L1 plays a crucial role in glycogen metabolism, glycolysis, and gluconeogenesis as a key enzyme, and increasing evidence links its function to cancer metabolism and progression. While PGM2 has a wide tissue distribution, PGM2L1 is highly expressed in the brain, accounting for the elevated concentrations of glucose-1,6-bisphosphate found there (PMID: 33979636, PMID: 40027181).

Storage

Storage:

Store at -20°C. Stable for one year after shipment.

Storage Buffer:

PBS with 0.02% sodium azide and 50% glycerol, pH7.3

Aliquoting is unnecessary for -20°C storage

For technical support and original validation data for this product please contact:

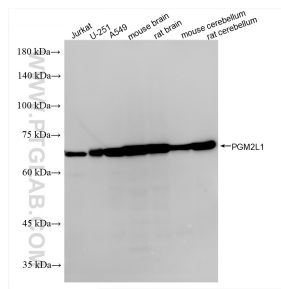
T: 4006900926

E: Proteintech-CN@ptglab.com

W: ptgcn.com

This product is exclusively available under Proteintech Group brand and is not available to purchase from any other manufacturer.

Selected Validation Data



Various lysates were subjected to SDS PAGE followed by western blot with 86209-1-RR (PGM2L1 antibody) at dilution of 1:3000 incubated at room temperature for 1.5 hours.