

For Research Use Only

Mouse DKK1 Recombinant antibody, PBS Only (Capture)

Catalog Number: 86207-1-PBS



Basic Information

Catalog Number: 86207-1-PBS	GenBank Accession Number: NM_010051.3	Purification Method: Protein A purification
Concentration: 1 mg/ml	GeneID (NCBI): 13380	CloneNo.: 250658B2
Source: Rabbit	UNIPROT ID: O54908	
Isotype: IgG	Full Name: dickkopf homolog 1 (Xenopus laevis)	
Immunogen Catalog Number: EG4649	Calculated MW: 29kDa	
	Observed MW: 30-35 kDa	

Applications

Tested Applications:
WB, Sandwich ELISA, Indirect ELISA, Sample test

Species Specificity:
mouse, rat

Background Information

DKK1, also named a SK and Dickkopf-1, belongs to the dickkopf family. DKKs play an important role in vertebrate development, where they locally inhibit Wnt regulated processes such as antero-posterior axial patterning, limb development, somitogenesis and eye formation. In the adult, Dkks are implicated in bone formation and bone disease, cancer and Alzheimer disease. SDS-PAGE and Western blot analysis demonstrated that DKK1 is expressed as a 35-kDa doublet protein, which is larger than the deduced molecular mass of 26 kDa. Sometime DKK1 is expressed as a 42- to 50-kDa secreted protein, with little change observed after glycanase treatment.

Storage

Storage:
Store at -80°C.
The product is shipped with ice packs. Upon receipt, store it immediately at -80°C

Storage Buffer:
PBS only, pH7.3

For technical support and original validation data for this product please contact:

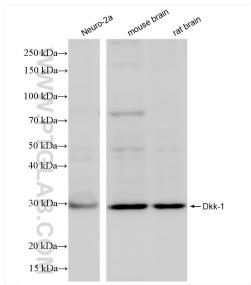
T: 4006900926

E: Proteintech-CN@ptglab.com

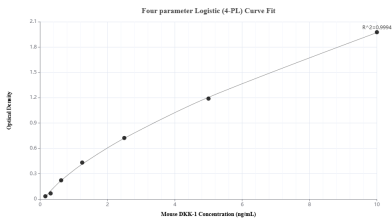
W: ptgcn.com

This product is exclusively available under Proteintech Group brand and is not available to purchase from any other manufacturer.

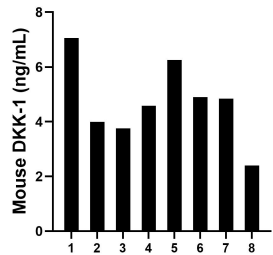
Selected Validation Data



Various lysates were subjected to SDS PAGE followed by western blot with 86207-1-RR (DKK1 antibody) at dilution of 1:2000 incubated at room temperature for 1.5 hours. This data was developed using the same antibody clone with 86207-1-PBS in a different storage buffer formulation.



Sandwich ELISA standard curve of MP02491-1, Mouse DKK1 Recombinant Matched Antibody Pair - PBS only. 86207-1-PBS was coated to a plate as the capture antibody and incubated with serial dilutions of standard Eg4649. 86207-2-PBS was HRP conjugated as the detection antibody. Range: 0.156-10 ng/mL



Serum of eight mice was measured. The mouse DKK1 concentration of detected samples was determined to be 4.72 ng/mL with a range of 2.40 - 7.06 ng/mL