

# NPTX2 Recombinant antibody

Catalog Number: 86203-1-RR

## Basic Information

## Catalog Number:

86203-1-RR

## Concentration:

1000 µg/ml

## Source:

Rabbit

## Isotype:

IgG

## Immunogen Catalog Number:

AG33808

## GenBank Accession Number:

BC009924

## GeneID (NCBI):

4885

## UNIPROT ID:

P47972

## Full Name:

neuronal pentraxin II

## Calculated MW:

47 kDa

## Observed MW:

47-50 kDa

## Purification Method:

Protein A purification

## CloneNo.:

250809A7

## Recommended Dilutions:

WB: 1:5000-1:50000

## Applications

## Tested Applications:

WB, ELISA

## Species Specificity:

human, mouse, rat

## Positive Controls:

WB : mouse brain tissue, SH-SY5Y cells, rat brain tissue

## Background Information

Neuronal pentraxins constitute a family of proteins that are homologous to C-reactive protein (CRP) and serum amyloid P component (SAP), including NPTX1, NPTX2, and the neuronal pentraxin receptor (NPTXR). NPTX2, also known as NARP (neuronal activity-regulated pentaxin), is a secreted protein involved in excitatory synapse formation. It also plays a role in the clustering of alpha-amino-3-hydroxy-5-methyl-4-isoxazolepropionic acid (AMPA)-type glutamate receptors at established synapses, resulting in non-apoptotic cell death of dopaminergic nerve cells. NPTX2 is highly up-regulated in Parkinson's disease (PD), suggesting it may be involved in the pathology of PD. (PMID: 12895424; 17987278; 10748068)

## Storage

## Storage:

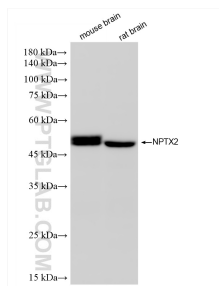
Store at -20°C. Stable for one year after shipment.

## Storage Buffer:

PBS with 0.02% sodium azide and 50% glycerol, pH7.3

Aliquoting is unnecessary for -20°C storage

## Selected Validation Data



Various lysates were subjected to SDS PAGE followed by western blot with 86203-1-RR (NPTX2 antibody) at dilution of 1:10000 incubated at room temperature for 1.5 hours.