

For Research Use Only

POLD1 Recombinant antibody, PBS Only (Capture)

Catalog Number: 86197-4-PBS



Basic Information

| | | |
|--|--|---|
| Catalog Number: 86197-4-PBS | GenBank Accession Number: BC008800 | Purification Method: Protein A purification |
| Concentration: 1 mg/ml | GeneID (NCBI): 5424 | CloneNo.: 250828A9 |
| Source: Rabbit | UNIPROT ID: P28340 | |
| Isotype: IgG | Full Name: polymerase (DNA directed), delta 1, catalytic subunit 125kDa | |
| Immunogen Catalog Number: AG8178 | Calculated MW: 1107 aa, 124 kDa | |

Applications

Tested Applications:
Sandwich ELISA, Indirect ELISA, Sample test

Species Specificity:
human

Background Information

Storage

Storage:
Store at -80°C.
The product is shipped with ice packs. Upon receipt, store it immediately at -80°C

Storage Buffer:
PBS only, pH7.3

For technical support and original validation data for this product please contact:

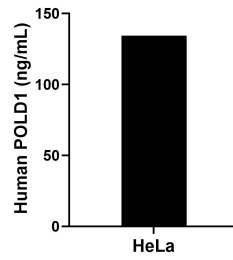
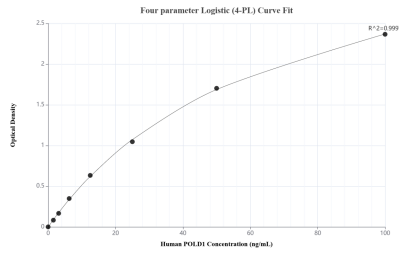
T: 4006900926

E: Proteintech-CN@ptglab.com

W: ptgcn.com

This product is exclusively available under Proteintech Group brand and is not available to purchase from any other manufacturer.

Selected Validation Data



Sandwich ELISA standard curve of MP02450-1, Human POLD1 Recombinant Matched Antibody Pair - PBS only. 86197-4-PBS was coated to a plate as the capture antibody and incubated with serial dilutions of standard Ag8178. 86197-3-PBS was HRP conjugated as the detection antibody. Range: 1.56-100 ng/mL

The mean POLD1 concentration was determined to be 134.28 ng/mL in HeLa cell extract based on a 1.20 mg/mL extract load.