

For Research Use Only

SCP2/SCP_x Recombinant antibody

Catalog Number: 86196-3-RR



Basic Information

Catalog Number:

86196-3-RR

Concentration:

1000 µg/ml

Source:

Rabbit

Isotype:

IgG

Immunogen Catalog Number:

AG5895

GenBank Accession Number:

BC067108

GeneID (NCBI):

6342

UNIPROT ID:

P22307

Full Name:

sterol carrier protein 2

Calculated MW:

59 kDa

Observed MW:

46 kDa, 58 kDa

Purification Method:

Protein A purification

CloneNo.:

250813C8

Recommended Dilutions:

WB: 1:2000-1:10000

IF/ICC: 1:200-1:800

Applications

Tested Applications:

WB, IF/ICC, ELISA

Species Specificity:

human, mouse, rat

Positive Controls:

WB : K-562 cells, HepG2 cells, HEK-293 cells, U-87 MG cells, NIH/3T3 cells, rat brain tissue

IF/ICC : k562,

Background Information

SCP2 (Sterol carrier protein-2), also called nonspecific lipid-transfer protein, is thought to play a major role in intracellular lipid transport and metabolism. Mutations of SCP2 have been associated with diseases involving abnormalities in lipid trafficking, such as Zellweger syndrome. The alternative splicing generates 58 kDa SCP_x and 13-15 kDa SCP2 proteins, both of which contain a C-terminal SCP2 domain. In addition to the SCP2 domain, SCP_x also contains an amino-terminal thiolase domain. The proteolytic cleavage of SCP_x occurred when it was imported into peroxisomes, giving rise to a 44-46 kDa thiolase and a 13-15 kDa SCP2. It recognizes the intact 58 kDa SCP_x protein as well as 44-46 kDa thiolase (PMID: 35996156).

Storage

Storage:

Store at -20°C. Stable for one year after shipment.

Storage Buffer:

PBS with 0.02% sodium azide and 50% glycerol, pH7.3

Aliquoting is unnecessary for -20°C storage

For technical support and original validation data for this product please contact:

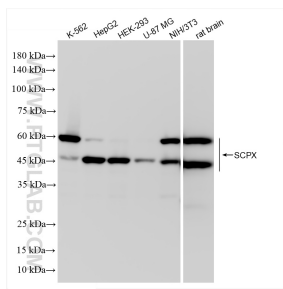
T: 4006900926

E: Proteintech-CN@ptglab.com

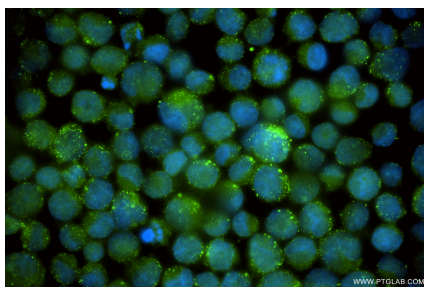
W: ptgcn.com

This product is exclusively available under Proteintech Group brand and is not available to purchase from any other manufacturer.

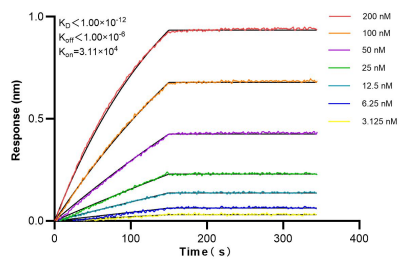
Selected Validation Data



Various lysates were subjected to SDS PAGE followed by western blot with 86196-3-RR (SCPX antibody) at dilution of 1:5000 incubated at room temperature for 1.5 hours.



Immunofluorescent analysis of (-20°C Ethanol) fixed k562 using SCP2/SCPx antibody (86196-3-RR, Clone: 250813C8) at dilution of 1:400 and CoraLite® 488-Conjugated Goat Anti-Rabbit IgG(H+L) (SA00013-2).



Biolayer interferometry (BLI) kinetic assays of 86196-3-RR against Human SCP2/SCPx were performed. The affinity constant is below 1 pM.