

For Research Use Only

SCPX Recombinant antibody

Catalog Number: 86196-1-RR



Basic Information

Catalog Number:

86196-1-RR

Concentration:

1000 µg/ml

Source:

Rabbit

Isotype:

IgG

Immunogen Catalog Number:

AG5895

GenBank Accession Number:

BC067108

GeneID (NCBI):

6342

UNIPROT ID:

P22307

Full Name:

sterol carrier protein 2

Calculated MW:

59 kDa

Observed MW:

46 kDa, 58 kDa

Purification Method:

Protein A purification

CloneNo.:

250813B3

Recommended Dilutions:

WB: 1:5000-1:50000

IF/ICC: 1:250-1:1000

Applications

Tested Applications:

WB, IF/ICC, ELISA

Species Specificity:

human, mouse, rat

Positive Controls:

WB : rat liver tissue, HepG2 cells, K-562 cells, NIH/3T3 cells, rat brain tissue, U-87 MG cells

IF/ICC : HEK-293 cells,

Background Information

SCPX protein is a kind of protein related to cholesterol absorption and transport, belonging to SCP-2 gene family. SCPX protein contains an N-terminal thiolase domain and a C-terminal SCP-2 domain. In cells, SCPX protein will be cut into 44-46 kDa thiolase and 13-15 kDa SCP-2 protein. SCPX-2 is a nonspecific lipid transporter, which is involved in the transport and metabolism of intracellular lipids. It is distributed in peroxisome, cytoplasm and nucleus, and may play a role as a transcription factor in nucleus.

Storage

Storage:

Store at -20°C. Stable for one year after shipment.

Storage Buffer:

PBS with 0.02% sodium azide and 50% glycerol, pH7.3

Aliquoting is unnecessary for -20°C storage

For technical support and original validation data for this product please contact:

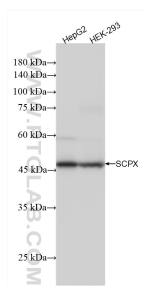
T: 4006900926

E: Proteintech-CN@ptglab.com

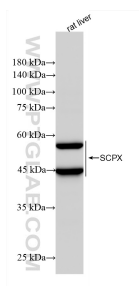
W: ptgcn.com

This product is exclusively available under Proteintech Group brand and is not available to purchase from any other manufacturer.

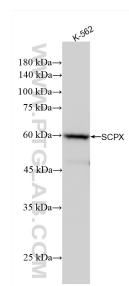
Selected Validation Data



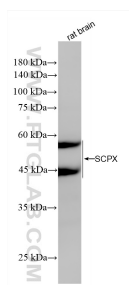
Various lysates were subjected to SDS PAGE followed by western blot with 86196-1-RR (SCPX antibody) at dilution of 1:10000 incubated at room temperature for 1.5 hours.



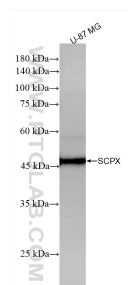
rat liver tissue were subjected to SDS PAGE followed by western blot with 86196-1-RR (SCPX antibody) at dilution of 1:10000 incubated at room temperature for 1.5 hours.



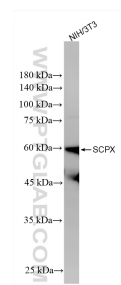
K-562 cells were subjected to SDS PAGE followed by western blot with 86196-1-RR (SCPX antibody) at dilution of 1:10000 incubated at room temperature for 1.5 hours.



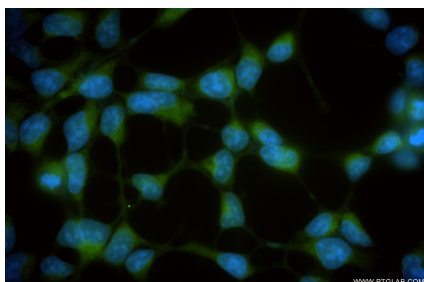
rat brain tissue were subjected to SDS PAGE followed by western blot with 86196-1-RR (SCPX antibody) at dilution of 1:10000 incubated at room temperature for 1.5 hours.



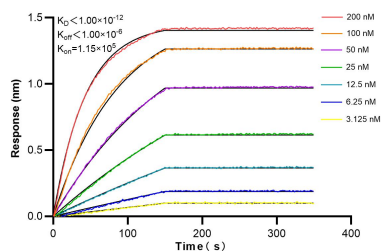
U-87 MG cells were subjected to SDS PAGE followed by western blot with 86196-1-RR (SCPX antibody) at dilution of 1:10000 incubated at room temperature for 1.5 hours.



NIH/3T3 cells were subjected to SDS PAGE followed by western blot with 86196-1-RR (SCPX antibody) at dilution of 1:10000 incubated at room temperature for 1.5 hours.



Immunofluorescent analysis of (-20°C Ethanol) fixed HEK-293 cells using SCPX antibody (86196-1-RR, Clone: 250813B3) at dilution of 1:500 and CoraLite®488-Conjugated Goat Anti-Rabbit IgG(H+L) (SA00013-2).



Biolayer interferometry (BLI) kinetic assays of 86196-1-RR against Human SCPX were performed. The affinity constant is below 1 pM.