

For Research Use Only

SCPX Recombinant antibody, PBS Only (Detector)

Catalog Number: 86196-1-PBS



Basic Information

Catalog Number:

86196-1-PBS

Concentration:

1 mg/ml

Source:

Rabbit

Isotype:

IgG

Immunogen Catalog Number:

AG5895

GenBank Accession Number:

BC067108

GeneID (NCBI):

6342

UNIPROT ID:

P22307

Full Name:

sterol carrier protein 2

Calculated MW:

59 kDa

Purification Method:

Protein A purification

CloneNo.:

250813B3

Applications

Tested Applications:

Cytometric bead array, Indirect ELISA, Sample test

Species Specificity:

human

Background Information

Storage

Storage:

Store at -80°C.

The product is shipped with ice packs. Upon receipt, store it immediately at -80°C

Storage Buffer:

PBS only, pH7.3

For technical support and original validation data for this product please contact:

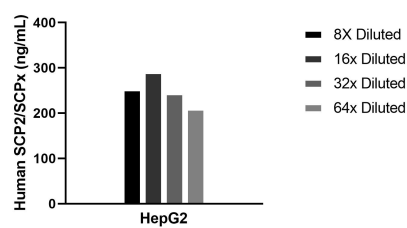
T: 4006900926

E: Proteintech-CN@ptglab.com

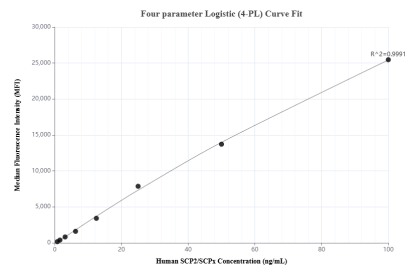
W: ptgcn.com

This product is exclusively available under Proteintech Group brand and is not available to purchase from any other manufacturer.

Selected Validation Data



The mean SCP2/SCPx concentration was determined to be 249.0 ng/mL in HepG2 cell extract based on a 0.9 mg/mL extract load.



Cytometric bead array standard curve of MP02291-1, SCP2/SCPx Recombinant Matched Antibody Pair, PBS Only. Capture antibody: 86196-2-PBS. Detection antibody: 86196-1-PBS. Standard: Ag5895. Range: 0.781-100 ng/mL.