

For Research Use Only

# OLR1/LOX1 Recombinant monoclonal antibody, PBS Only

Catalog Number: 86194-3-PBS



## Basic Information

<b>Catalog Number:</b> 86194-3-PBS	<b>GenBank Accession Number:</b> NM_002543.3	<b>Purification Method:</b> Protein A purification
<b>Source:</b> Rabbit	<b>GeneID (NCBI):</b> 4973	<b>CloneNo.:</b> 250525A3
<b>Isotype:</b> IgG	<b>UNIPROT ID:</b> P78380-1	
<b>Immunogen Catalog Number:</b> EG2911	<b>Full Name:</b> oxidized low density lipoprotein (lectin-like) receptor 1	
	<b>Calculated MW:</b> 31 kDa	
	<b>Observed MW:</b> 50-55 kDa	

## Applications

**Tested Applications:**  
WB, Indirect ELISA

**Species Specificity:**  
human, mouse

## Background Information

OLR1/LOX-1 acts as a receptor, in the form of a homodimer, that mediates the recognition, internalization, and degradation of oxidatively modified low density lipoprotein (oxLDL) (PMID: 9052782, 15695803). OLR1 is predominantly expressed in endothelial cells and vascular-rich organs such as the placenta, lung, liver, and brain (PMID: 9828121). OLR1 is a protein containing 273 amino acids with a calculated molecular mass of 31 kDa but an apparent molecular mass of 50 kDa, which may result from the glycosylation of four potential N-linked glycosylation sites located at the C-terminal domain (PMID: 9052782).

## Storage

**Storage:**  
Store at -80°C.  
**The product is shipped with ice packs. Upon receipt, store it immediately at -80°C**

**Storage Buffer:**  
PBS only, pH7.3

For technical support and original validation data for this product please contact:

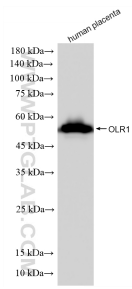
T: 4006900926

E: [Proteintech-CN@ptglab.com](mailto:Proteintech-CN@ptglab.com)

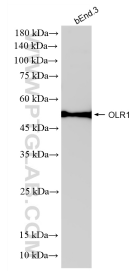
W: [ptgcn.com](http://ptgcn.com)

**This product is exclusively available under Proteintech Group brand and is not available to purchase from any other manufacturer.**

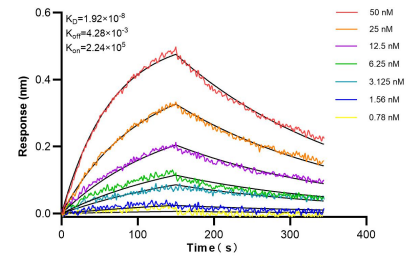
## Selected Validation Data



Human placenta tissue was subjected to SDS PAGE followed by western blot with 86194-3-RR (OLR1 antibody) at dilution of 1:2000 incubated at room temperature for 1.5 hours. This data was developed using the same antibody clone with 86194-3-PBS in a different storage buffer formulation.



bEnd.3 cells were subjected to SDS PAGE followed by western blot with 86194-3-RR (OLR1 antibody) at dilution of 1:2000 incubated at room temperature for 1.5 hours. This data was developed using the same antibody clone with 86194-3-PBS in a different storage buffer formulation.



Bi-layer interferometry (BLI) kinetic assays of 86194-3-RR against Human OLR1/LOX1 were performed. The affinity constant is 1.92 nM.