

For Research Use Only

# FKBP5 Recombinant antibody, PBS Only

Catalog Number: 86189-1-PBS



## Basic Information

Catalog Number: 86189-1-PBS	GenBank Accession Number: BC042605	Purification Method: Protein A purification
Concentration: 1 mg/ml	GeneID (NCBI): 2289	CloneNo.: 250798G2
Source: Rabbit	UNIPROT ID: Q13451	
Isotype: IgG	Full Name: FK506 binding protein 5	
Immunogen Catalog Number: AG5337	Calculated MW: 457 aa, 51 kDa	
	Observed MW: 51 kDa	

## Applications

Tested Applications:  
WB, Indirect ELISA

Species Specificity:  
human

## Background Information

FKBP5, also known as FKBP51, belongs to the family of immunophilins, FK506 binding proteins (FKBPs). FKBP5 is a negative regulator of GR activity and plays a key role in the termination of the stress response by GRs. FKBP5 limits GR function by decreasing ligand-binding sensitivity, thereby delaying nuclear translocation and reducing GR-dependent transcriptional activity. The known functions of FKBP5 include the regulation of steroid hormone receptors, inhibiting apoptosis in cancer cells, promoting Akt1 dephosphorylation, and inhibiting the Akt1 pathways, to name a few. FKBP5 is widely expressed and the calculated molecular weight is 51 kDa (PMID: 21119664, PMID: 34077736, PMID: 37154033).

## Storage

Storage:  
Store at -80°C.  
The product is shipped with ice packs. Upon receipt, store it immediately at -80°C

Storage Buffer:  
PBS only, pH7.3

For technical support and original validation data for this product please contact:

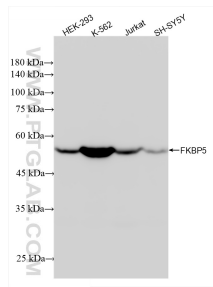
T: 4006900926

E: Proteintech-CN@ptglab.com

W: ptgcn.com

This product is exclusively available under Proteintech Group brand and is not available to purchase from any other manufacturer.

## Selected Validation Data



Various lysates were subjected to SDS PAGE followed by western blot with 86189-1-RR (FKBP5 antibody) at dilution of 1:5000 incubated at room temperature for 1.5 hours. This data was developed using the same antibody clone with 86189-1-PBS in a different storage buffer formulation.