

For Research Use Only

# MARVELD2 Recombinant antibody

Catalog Number: 86188-1-RR



## Basic Information

Catalog Number:

86188-1-RR

Concentration:

1000 µg/ml

Source:

Rabbit

Isotype:

IgG

Immunogen Catalog Number:

AG4446

GenBank Accession Number:

BC033689

GeneID (NCBI):

153562

UNIPROT ID:

Q8N4S9

Full Name:

MARVEL domain containing 2

Calculated MW:

558 aa, 64 kDa

Observed MW:

60-64 kDa

Purification Method:

Protein A purification

CloneNo.:

250774G9

Recommended Dilutions:

WB: 1:1000-1:6000

IF/ICC: 1:250-1:1000

## Applications

Tested Applications:

WB, IF/ICC, ELISA

Species Specificity:

human

Positive Controls:

WB : HeLa cells, MCF-7 cells

IF/ICC : MCF-7 cells,

## Background Information

MARVELD2, also named as Tricellulin or TRIC, is a 558 amino acid protein, which contains one MARVEL domain. MARVELD2 localizes the cell membrane and plays a role in the formation of the epithelial barriers. MARVELD2, is a first integral membrane protein that is concentrated at the vertically oriented tight junction strands of tricellular contacts. MARVELD2 may be a component to maintain the integrity for peripheral nervous system myelin function and morphology.

## Storage

Storage:

Store at -20°C. Stable for one year after shipment.

Storage Buffer:

PBS with 0.02% sodium azide and 50% glycerol, pH7.3

Aliquoting is unnecessary for -20°C storage

For technical support and original validation data for this product please contact:

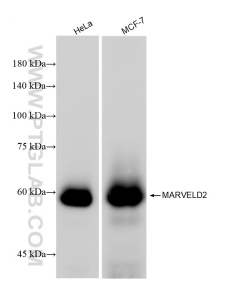
T: 4006900926

E: [Proteintech-CN@ptglab.com](mailto:Proteintech-CN@ptglab.com)

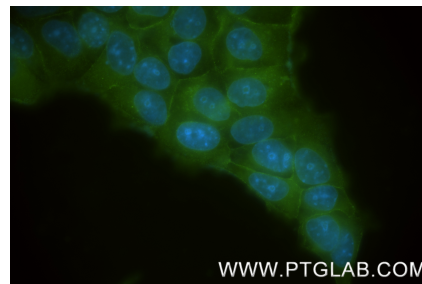
W: [ptgcn.com](http://ptgcn.com)

This product is exclusively available under Proteintech Group brand and is not available to purchase from any other manufacturer.

## Selected Validation Data



Various lysates were subjected to SDS PAGE followed by western blot with 86188-1-RR (MARVELD2 antibody) at dilution of 1:3000 incubated at room temperature for 1.5 hours.



Immunofluorescent analysis of (-20°C Methanol) fixed MCF-7 cells using MARVELD2 antibody (86188-1-RR, Clone: 250774G9) at dilution of 1:500 and CoraLite® 488-Conjugated Goat Anti-Rabbit IgG(H+L) (SA00013-2).