

For Research Use Only

# MARVELD2 Recombinant antibody, PBS Only

Catalog Number: 86188-1-PBS



## Basic Information

Catalog Number:	86188-1-PBS	GenBank Accession Number:	BC033689	Purification Method:	Protein A purification
Concentration:	1 mg/ml	GeneID (NCBI):	153562	CloneNo.:	250774G9
Source:	Rabbit	UNIPROT ID:	Q8N4S9		
Isotype:	IgG	Full Name:	MARVEL domain containing 2		
Immunogen Catalog Number:	AG4446	Calculated MW:	558 aa, 64 kDa		
		Observed MW:	60-64 kDa		

## Applications

**Tested Applications:**  
WB, IF/ICC, Indirect ELISA

**Species Specificity:**  
human

## Background Information

MARVELD2, also named as Tricellulin or TRIC, is a 558 amino acid protein, which contains one MARVEL domain. MARVELD2 localizes the cell membrane and plays a role in the formation of the epithelial barriers. MARVELD2, is a first integral membrane protein that is concentrated at the vertically oriented tight junction strands of tricellular contacts. MARVELD2 may be a component to maintain the integrity for peripheral nervous system myelin function and morphology.

## Storage

**Storage:**  
Store at -80°C.

**The product is shipped with ice packs. Upon receipt, store it immediately at -80°C**

**Storage Buffer:**  
PBS only, pH7.3

For technical support and original validation data for this product please contact:

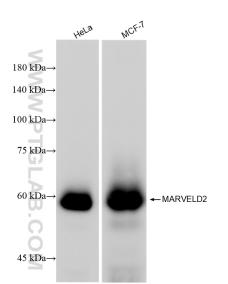
T: 4006900926

E: [Proteintech-CN@ptglab.com](mailto:Proteintech-CN@ptglab.com)

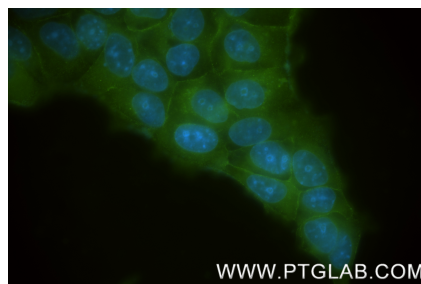
W: [ptgcn.com](http://ptgcn.com)

**This product is exclusively available under Proteintech Group brand and is not available to purchase from any other manufacturer.**

## Selected Validation Data



Various lysates were subjected to SDS PAGE followed by western blot with 86188-1-RR (MARVELD2 antibody) at dilution of 1:3000 incubated at room temperature for 1.5 hours. This data was developed using the same antibody clone with 86188-1-PBS in a different storage buffer formulation.



Immunofluorescent analysis of (-20°C Methanol) fixed MCF-7 cells using MARVELD2 antibody (86188-1-RR, Clone: 250774G9) at dilution of 1:500 and CoraLite® 488-Conjugated Goat Anti-Rabbit IgG(H+L) (SA00013-2). This data was developed using the same antibody clone with 86188-1-PBS in a different storage buffer formulation.