

For Research Use Only

# GPSM2 Recombinant antibody

Catalog Number: 86175-1-RR



## Basic Information

Catalog Number:

86175-1-RR

Concentration:

1000  $\mu$ g/ml

Source:

Rabbit

Isotype:

IgG

Immunogen Catalog Number:

AG25195

GenBank Accession Number:

BC027732

GeneID (NCBI):

29899

UNIPROT ID:

P81274

Full Name:

G-protein signaling modulator 2  
(AGS3-like, C. elegans)

Calculated MW:

75 kDa

Observed MW:

70-77 kDa

Purification Method:

Protein A purification

CloneNo.:

250793G2

Recommended Dilutions:

WB: 1:2000-1:10000

## Applications

Tested Applications:

WB, ELISA

Species Specificity:

human

Positive Controls:

WB: HeLa cells, HepG2 cells, HEK-293 cells, mouse  
liver tissue, rat liver tissue

## Background Information

GPSM2 belongs to a family of proteins that modulate activation of G proteins. GPSM2 assists in the exchange of guanine nucleotides, and allows extracellular signals to be transmitted to cells via cell surface, and ultimately plays a key role in the activation of G-proteins. Therefore, GPSM2 is a critical factor for the stability of cell division. Some recent studies have shown that GPSM2 messenger RNA (mRNA) is overexpressed and plays a positive role in the development of certain tumors, such as liver cancer, pancreatic cancer, breast cancer. It also plays a role in neuroblast division and in the development of normal hearing. Mutations in GPSM2 are associated with autosomal recessive nonsyndromic deafness (DFNB82), which is a form of non-syndromic deafness characterized by prelingual, bilateral, severe, sensorineural hearing loss.

## Storage

Storage:

Store at -20°C. Stable for one year after shipment.

Storage Buffer:

PBS with 0.02% sodium azide and 50% glycerol, pH7.3

Aliquoting is unnecessary for -20°C storage

For technical support and original validation data for this product please contact:

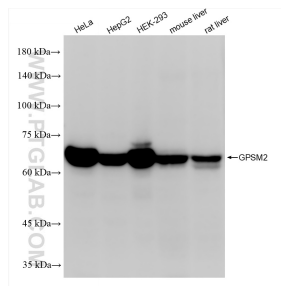
T: 4006900926

E: [Proteintech-CN@ptglab.com](mailto:Proteintech-CN@ptglab.com)

W: [ptgcn.com](http://ptgcn.com)

This product is exclusively available under Proteintech Group brand and is not available to purchase from any other manufacturer.

## Selected Validation Data



Various lysates were subjected to SDS PAGE followed by western blot with 86175-1-RR (GP2SM2 antibody) at dilution of 1:5000 incubated at room temperature for 1.5 hours.