

For Research Use Only

SF3A1 Recombinant antibody

Catalog Number: 86170-2-RR



Basic Information

Catalog Number:

86170-2-RR

Concentration:

1000 µg/ml

Source:

Rabbit

Isotype:

IgG

Immunogen Catalog Number:

AG8196

GenBank Accession Number:

BC007684

GeneID (NCBI):

10291

UNIPROT ID:

Q15459

Full Name:

splicing factor 3a, subunit 1, 120kDa

Calculated MW:

793 aa, 89 kDa

Observed MW:

120 kDa

Purification Method:

Protein A purification

CloneNo.:

250768F4

Recommended Dilutions:

WB: 1:2000-1:10000

IF/ICC: 1:250-1:1000

Applications

Tested Applications:

WB, IF/ICC, ELISA

Species Specificity:

human, rat

Positive Controls:

WB : HeLa cells, rat kidney tissue, HEK-293 cells, K-562 cells, HL-60 cells, LNCaP cells, Neuro-2a cells

IF/ICC : HeLa cells,

Background Information

SF3A1, also known as SF3a120, is a 793 amino acid protein, which is a Subunit of the splicing factor SF3A required for 'A' complex assembly formed by the stable binding of U2 snRNP to the branchpoint sequence (BPS) in pre-mRNA. SF3A1 also be involved in the assembly of the 'E' complex. The calculated molecular weight of SF3A1 is 88 kDa, but the modified SF3A1 is about 115-120 kDa.(PMID: 7489498)

Storage

Storage:

Store at -20°C. Stable for one year after shipment.

Storage Buffer:

PBS with 0.02% sodium azide and 50% glycerol, pH7.3

Aliquoting is unnecessary for -20°C storage

For technical support and original validation data for this product please contact:

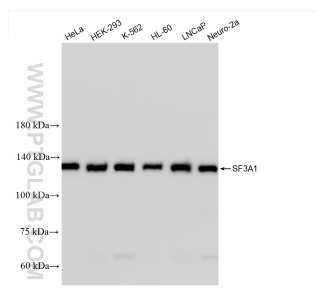
T: 4006900926

E: Proteintech-CN@ptglab.com

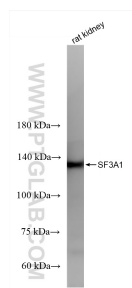
W: ptgcn.com

This product is exclusively available under Proteintech Group brand and is not available to purchase from any other manufacturer.

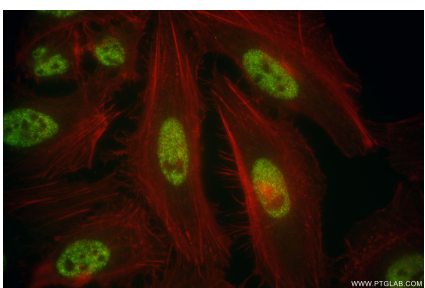
Selected Validation Data



Various lysates were subjected to SDS PAGE followed by western blot with 86170-2-RR (SF3A1 antibody) at dilution of 1:5000 incubated at room temperature for 1.5 hours.



rat kidney tissue were subjected to SDS PAGE followed by western blot with 86170-2-RR (SF3A1 antibody) at dilution of 1:5000 incubated at room temperature for 1.5 hours.



Immunofluorescent analysis of (4% PFA) fixed HeLa cells using SF3A1 antibody (86170-2-RR, Clone: 250768F4) at dilution of 1:500 and Coralite® 488-Conjugated Goat Anti-Rabbit IgG(H+L) (SA00013-2), CL594-Phalloidin (red).