

For Research Use Only

CSNK2A2 Recombinant antibody

Catalog Number: 86169-2-RR



Basic Information

Catalog Number:

86169-2-RR

Concentration:

1000 µg/ml

Source:

Rabbit

Isotype:

IgG

Immunogen Catalog Number:

AG0877

GenBank Accession Number:

BC008812

GeneID (NCBI):

1459

UNIPROT ID:

P19784

Full Name:

casein kinase 2, alpha prime polypeptide

Calculated MW:

41 kDa

Observed MW:

35-40 kDa

Purification Method:

Protein A purification

CloneNo.:

250812B3

Recommended Dilutions:

WB: 1:5000-1:50000

IF/ICC: 1:50-1:500

Applications

Tested Applications:

WB, IF/ICC, ELISA

Species Specificity:

human, mouse, rat

Positive Controls:

WB : HeLa cells, HepG2 cells, HEK-293 cells, A-673 cells, Jurkat cells, NIH/3T3 cells, PC-12 cells

IF/ICC : HeLa cells,

Background Information

CSNK2A2(Casein kinase II subunit alpha') is also named as CK2A3, CK2A2, CSNK2A1, CK2 and belongs to the protein kinase superfamily. It can function as a component of the p53/TP53-dependent spindle assembly checkpoint (SAC) that maintains cyclin-B-CDK1 activity and G2 arrest in response to spindle damage during mitosis. It also can protect against ionizing radiation-induced apoptosis partly by phosphorylating and activating SIRT1.

Storage

Storage:

Store at -20°C. Stable for one year after shipment.

Storage Buffer:

PBS with 0.02% sodium azide and 50% glycerol, pH7.3

Aliquoting is unnecessary for -20°C storage

For technical support and original validation data for this product please contact:

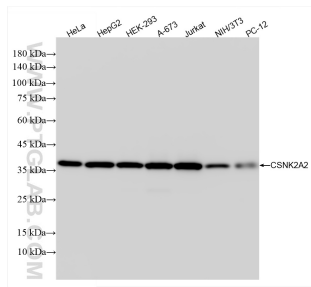
T: 4006900926

E: Proteintech-CN@ptglab.com

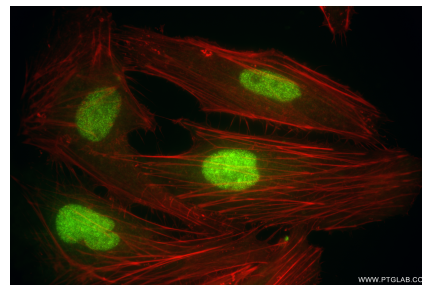
W: ptgcn.com

This product is exclusively available under Proteintech Group brand and is not available to purchase from any other manufacturer.

Selected Validation Data



Various lysates were subjected to SDS PAGE followed by western blot with 86169-2-RR (CSNK2A2 antibody) at dilution of 1:10000 incubated at room temperature for 1.5 hours.



Immunofluorescent analysis of (4% PFA) fixed HeLa cells using CSNK2A2 antibody (86169-2-RR, Clone: 250812B3) at dilution of 1:200 and CoraLite® 488-Conjugated Goat Anti-Rabbit IgG(H+L) (SA00013-2), CL594-Phalloidin (red).