

For Research Use Only

RTN2 Recombinant antibody, PBS Only (Capture)

Catalog Number: 86162-1-PBS



Basic Information

Catalog Number: 86162-1-PBS	GenBank Accession Number: BC014244	Purification Method: Protein A purification
Concentration: 1 mg/ml	GeneID (NCBI): 6253	CloneNo.: 250823C1
Source: Rabbit	UNIPROT ID: O75298	
Isotype: IgG	Full Name: reticulon 2	
Immunogen Catalog Number: AG1655	Calculated MW: 59 kDa, 51 kDa, 22 kDa	
	Observed MW: 20-23 kDa	

Applications

Tested Applications:
WB, Cytometric bead array, Indirect ELISA, Sample test

Species Specificity:
human, mouse, rat

Background Information

Reticulon (RTN) proteins are a group of membrane-bound proteins that largely reside in endoplasmic reticulum (ER) (PMID: 18177508). Reticulon proteins share a common sequence feature, the reticulon homology domain (RHD). They are involved in shaping the tubular endoplasmic reticulum network, membrane trafficking, inhibition of axonal growth, and apoptosis (PMID: 24218324). Four mammalian reticulons (RTN1-4) exist. Human RTN2 gene produces three isoforms termed RTN2-A, RTN2-B, and RTN2-C. Isoform RTN2-C has a calculated molecular weight of 22 kDa and is highly expressed in skeletal muscle.

Storage

Storage:
Store at -80°C.
The product is shipped with ice packs. Upon receipt, store it immediately at -80°C

Storage Buffer:
PBS only, pH7.3

For technical support and original validation data for this product please contact:

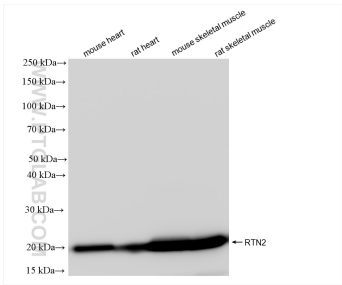
T: 4006900926

E: Proteintech-CN@ptglab.com

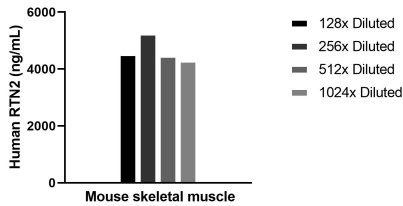
W: ptgcn.com

This product is exclusively available under Proteintech Group brand and is not available to purchase from any other manufacturer.

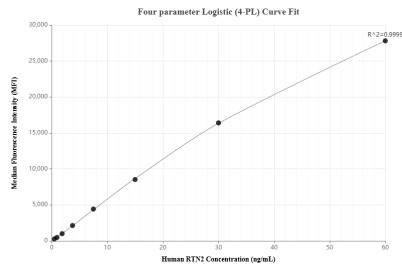
Selected Validation Data



Various lysates were subjected to SDS PAGE followed by western blot with 86162-1-RR (RTN2 antibody) at dilution of 1:10000 incubated at room temperature for 1.5 hours. This data was developed using the same antibody clone with 86162-1-PBS in a different storage buffer formulation.



The mean RTN2 concentration was determined to be 4623.0 ng/mL in Mouse skeletal muscle tissue extract based on a 4.1 mg/mL extract load.



Cytometric bead array standard curve of MP02385-1, RTN2 Recombinant Matched Antibody Pair, PBS Only. Capture antibody: 86162-1-PBS. Detection antibody: 86162-2-PBS. Standard: Ag1655. Range: 0.469-60 ng/mL.