

# CD146/MCAM Recombinant antibody

Catalog Number: 86159-3-RR

## Basic Information

<b>Catalog Number:</b> 86159-3-RR	<b>GenBank Accession Number:</b> NM_023061.2	<b>Purification Method:</b> Protein A purification
<b>Concentration:</b> 1000 µg/ml	<b>GeneID (NCBI):</b> 84004	<b>CloneNo.:</b> 250806F12
<b>Source:</b> Rabbit	<b>UNIPROT ID:</b> Q8R2Y2-1	<b>Recommended Dilutions:</b> WB: 1:5000-1:50000 IF/ICC: 1:250-1:1000
<b>Isotype:</b> IgG	<b>Full Name:</b> melanoma cell adhesion molecule	
<b>Immunogen Catalog Number:</b> EG2667	<b>Calculated MW:</b> 72 kDa <b>Observed MW:</b> 120-140 kDa	

## Applications

<b>Tested Applications:</b> WB, IF/ICC, ELISA	<b>Positive Controls:</b>
<b>Species Specificity:</b> mouse	<b>WB :</b> bEnd.3 cells, mouse liver tissue <b>IF/ICC :</b> bEnd.3 cells,

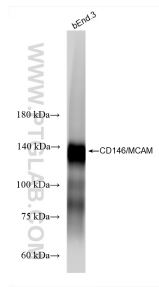
## Background Information

CD146, also known as melanoma cell adhesion molecule (MCAM) or MUC18, originally identified as a biomarker of melanoma progression, is a transmembrane glycoprotein of 113-130 kDa, belonging to the immunoglobulin (Ig) superfamily (PMID: 8378324; 25993332). Structurally, it consists of five Ig domains, a transmembrane domain, and a cytoplasmic region. In normal adult tissue, CD146 is primarily expressed by vascular endothelium and smooth muscle. CD146 is a key cell adhesion protein in vascular endothelial cell activity and angiogenesis, and has been used as marker of circulating endothelium cells (CECs) (PMID: 19356677). In addition to the membrane-anchored form of CD146, a soluble form of CD146 (sCD146, 105 kDa) has also been found in human plasma and in the supernatant of cultured human endothelial cells (PMID: 9462829; 19229070; 16374253; 14597988).

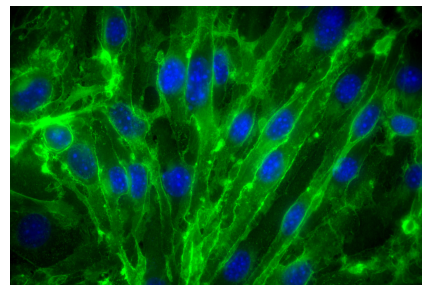
## Storage

**Storage:**  
Store at -20°C. Stable for one year after shipment.  
**Storage Buffer:**  
PBS with 0.02% sodium azide and 50% glycerol, pH7.3  
**Aliquoting is unnecessary for -20°C storage**

## Selected Validation Data



bEnd.3 cells were subjected to SDS PAGE followed by western blot with 86159-3-RR (Mcam antibody) at dilution of 1:10000 incubated at room temperature for 1.5 hours.



Immunofluorescent analysis of (4% PFA) fixed bEnd.3 cells using CD146/MCAM antibody (86159-3-RR, Clone: 250806F12 ) at dilution of 1:500 and CoraLite® 488-Conjugated Goat Anti-Rabbit IgG(H+L) (SA00013-2).