

For Research Use Only

AIF Recombinant antibody, PBS Only (Detector)

Catalog Number: 86156-1-PBS



Basic Information

Catalog Number:	86156-1-PBS	GenBank Accession Number:	BC111065	Purification Method:	Protein A purification
Concentration:	1 mg/ml	GeneID (NCBI):	9131	CloneNo.:	250772G11
Source:	Rabbit	UNIPROT ID:	O95831		
Isotype:	IgG	Full Name:	apoptosis-inducing factor, mitochondrion-associated, 1		
Immunogen Catalog Number:	AG13268	Calculated MW:	609 aa, 66 kDa		
		Observed MW:	67 kDa		

Applications

Tested Applications:
WB, IF/ICC, Cytometric bead array, Indirect ELISA, Sample test

Species Specificity:
human, mouse, rat

Background Information

Apoptosis-inducing factor (AIF) is one of the mitochondrial proteins to be released into the cytosol during apoptosis, and it is discovered as the first protein that regulates caspase-independent apoptosis (PMID:20494118). AIF is encoded as a 67 kDa protein that contains a mitochondrial localization signal (MLS) in the N-terminus. It is cleaved from the 62 kDa to the 57 kDa form following ischemic injury and translocated from the mitochondria to the nucleus in a calpain-dependent manner (PMID:19332058).

Storage

Storage:
Store at -80°C.
The product is shipped with ice packs. Upon receipt, store it immediately at -80°C

Storage Buffer:
PBS only, pH7.3

For technical support and original validation data for this product please contact:

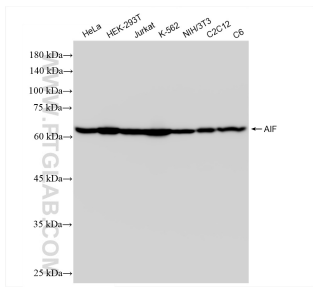
T: 4006900926

E: Proteintech-CN@ptglab.com

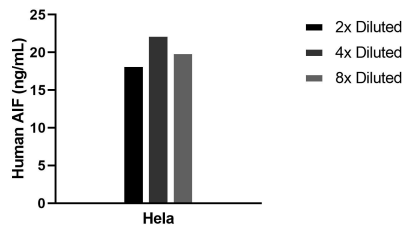
W: ptgcn.com

This product is exclusively available under Proteintech Group brand and is not available to purchase from any other manufacturer.

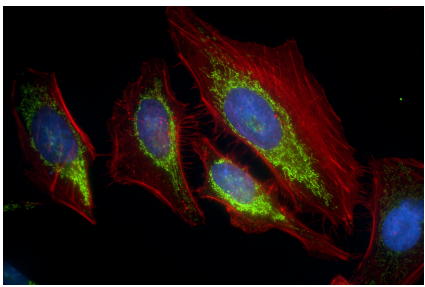
Selected Validation Data



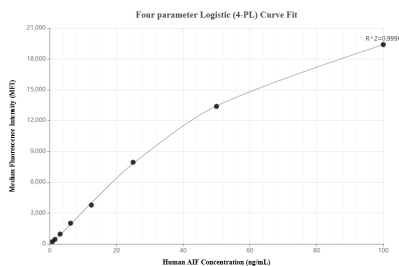
Various lysates were subjected to SDS PAGE followed by western blot with 86156-1-RR (AIF antibody) at dilution of 1:10000 incubated at room temperature for 1.5 hours. This data was developed using the same antibody clone with 86156-1-PBS in a different storage buffer formulation.



The mean AIF concentration was determined to be 20.2 ng/mL in HeLa cell extract based on a 0.9 mg/mL extract load.



Immunofluorescent analysis of (4% PFA) fixed HeLa cells using AIF antibody (86156-1-RR, Clone: 250772G11) at dilution of 1:1000 and CoraLite®488-Conjugated Goat Anti-Rabbit IgG(H+L) (SA00013-2), CL594-Phalloidin (red). This data was developed using the same antibody clone with 86156-1-PBS in a different storage buffer formulation.



Cytometric bead array standard curve of MPO2287-1, AIF Recombinant Matched Antibody Pair, PBS Only. Capture antibody: 86156-2-PBS. Detection antibody: 86156-1-PBS. Standard: Ag13268. Range: 0.781-100 ng/mL.