

For Research Use Only

PIP Recombinant antibody, PBS Only (Detector)

Catalog Number: 86152-3-PBS



Basic Information

Catalog Number:

86152-3-PBS

Concentration:

1 mg/ml

Source:

Rabbit

Isotype:

IgG

Immunogen Catalog Number:

EG3018

GenBank Accession Number:

NM_002652.3

GeneID (NCBI):

5304

UNIPROT ID:

P12273

Full Name:

prolactin-induced protein

Calculated MW:

17 kDa

Purification Method:

Protein A purification

CloneNo.:

250676B11

Applications

Tested Applications:

Sandwich ELISA, Indirect ELISA, Sample test

Species Specificity:

human

Background Information

Storage

Storage:

Store at -80°C.

The product is shipped with ice packs. Upon receipt, store it immediately at -80°C

Storage Buffer:

PBS only, pH7.3

For technical support and original validation data for this product please contact:

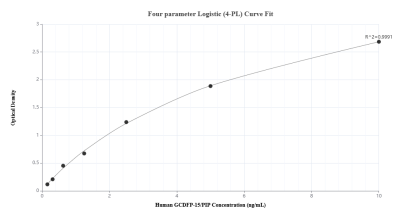
T: 4006900926

E: Proteintech-CN@ptglab.com

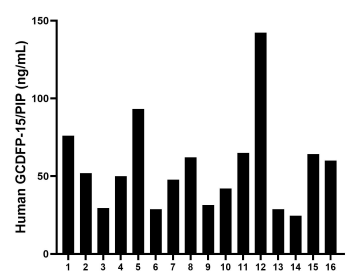
W: ptgcn.com

This product is exclusively available under Proteintech Group brand and is not available to purchase from any other manufacturer.

Selected Validation Data



Sandwich ELISA standard curve of MP02262-2, Human GCDFP-15/PIP Recombinant Matched Antibody Pair - PBS only. 86152-1-PBS was coated to a plate as the capture antibody and incubated with serial dilutions of standard Eg3018. 86152-3-PBS was HRP conjugated as the detection antibody. Range: 0.156-10 ng/mL



Serum of six individual healthy human donors was measured. The human TNFR1/CD120a concentration of detected samples was determined to be 56.11 ng/mL with a range of 24.53 - 142.30 ng/mL