

For Research Use Only

GCDFP-15/PIP Recombinant antibody, PBS Only (Capture)

Catalog Number: 86152-2-PBS



Basic Information

Catalog Number:

86152-2-PBS

Concentration:

1 mg/ml

Source:

Rabbit

Isotype:

IgG

Immunogen Catalog Number:

EG3018

GenBank Accession Number:

NM_002652.3

GeneID (NCBI):

5304

UNIPROT ID:

P12273

Full Name:

prolactin-induced protein

Calculated MW:

17 kDa

Purification Method:

Protein A purification

CloneNo.:

250676E3

Applications

Tested Applications:

Cytometric bead array, Indirect ELISA, Sample test

Species Specificity:

human

Background Information

Storage

Storage:

Store at -80°C.

The product is shipped with ice packs. Upon receipt, store it immediately at -80°C

Storage Buffer:

PBS only, pH7.3

For technical support and original validation data for this product please contact:

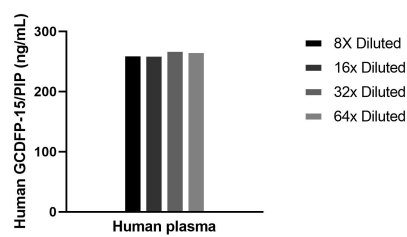
T: 4006900926

E: Proteintech-CN@ptglab.com

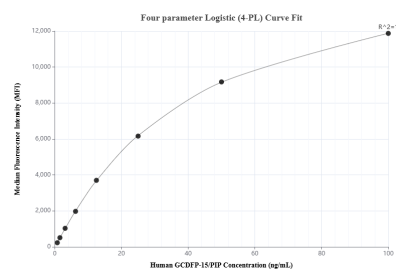
W: ptgcn.com

This product is exclusively available under Proteintech Group brand and is not available to purchase from any other manufacturer.

Selected Validation Data



The mean GCDPF-15/PIP concentration was determined to be 267.1 ng/mL in human serum.



Cytometric bead array standard curve of MP02262-1, GCDPF-15/PIP Recombinant Matched Antibody Pair, PBS Only. Capture antibody: 86152-2-PBS. Detection antibody: 86152-1-PBS. Standard: Eg3018. Range: 0.781-100 ng/mL.