

For Research Use Only

Cyclin A1 Recombinant antibody

Catalog Number: 86151-1-RR



Basic Information

Catalog Number:

86151-1-RR

Concentration:

1000 μ g/ml

Source:

Rabbit

Isotype:

IgG

Immunogen Catalog Number:

AG4005

GenBank Accession Number:

BC036346

GeneID (NCBI):

8900

UNIPROT ID:

P78396

Full Name:

cyclin A1

Calculated MW:

464 aa, 52 kDa

Observed MW:

52-55 kDa

Purification Method:

Protein A purification

CloneNo.:

250550D7

Recommended Dilutions:

WB: 1:2000-1:10000

Applications

Tested Applications:

WB, ELISA

Species Specificity:

human, rat

Positive Controls:

WB : SKOV-3 cells, rat testis tissue, human testis tissue

Background Information

CCNA1 belongs to the highly conserved cyclin family, whose members are characterized by a dramatic periodicity in protein abundance through the cell cycle. CCNA1 binds both CDK2 and CDC2 kinases, which give two distinct kinase activities, one appearing in S phase, the other in G2, and thus regulate separate functions in cell cycle. CCNA1 was found to bind to important cell cycle regulators, such as Rb family proteins, transcription factor E2F-1, and the p21 family proteins. In general, the expression of CCNA1 is tissue-specific and high CCNA1 expression is limited to testis; besides, lower levels of CCNA1 expression are also observed in other human cell lines and in healthy brain. Currently, CCNA1 expression has been illustrated to be downregulated in various tumors, including head and neck squamous-cell cancer (HNSCC) and nasopharyngeal carcinoma; and the promoter of the CCNA1 gene is found to be frequently methylated in colon cancer and HNSCC.

Storage

Storage:

Store at -20°C. Stable for one year after shipment.

Storage Buffer:

PBS with 0.02% sodium azide and 50% glycerol, pH7.3

Aliquoting is unnecessary for -20°C storage

For technical support and original validation data for this product please contact:

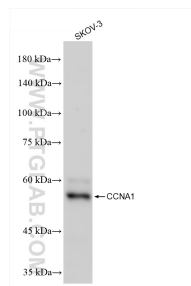
T: 4006900926

E: Proteintech-CN@ptglab.com

W: ptgcn.com

This product is exclusively available under Proteintech Group brand and is not available to purchase from any other manufacturer.

Selected Validation Data



SKOV-3 cells were subjected to SDS PAGE followed by western blot with 86151-1-RR (CCNA1 antibody) at dilution of 1:5000 incubated at room temperature for 1.5 hours.