

For Research Use Only

# KLK9 Recombinant antibody, PBS Only

Catalog Number: 86149-1-PBS



## Basic Information

Catalog Number: 86149-1-PBS	GenBank Accession Number: NM_012315.1	Purification Method: Protein A purification
Concentration: 1 mg/ml	GeneID (NCBI): 284366	CloneNo.: 250489A5
Source: Rabbit	UNIPROT ID: Q9UKQ9-1	
Isotype: IgG	Full Name: kallikrein-related peptidase 9	
Immunogen Catalog Number: EG2779	Calculated MW: 28 kDa	
	Observed MW: 22-25 kDa	

## Applications

Tested Applications:  
WB, Indirect ELISA

Species Specificity:  
human, mouse

## Background Information

KLK9 (Kallikrein-Related Peptidase 9) is a serine protease belonging to the kallikrein subfamily, which may be involved in a variety of physiological processes, such as inflammatory response, cell proliferation and tissue repair.

## Storage

Storage:  
Store at -80°C.  
**The product is shipped with ice packs. Upon receipt, store it immediately at -80°C**

Storage Buffer:  
PBS only, pH7.3

For technical support and original validation data for this product please contact:

T: 4006900926

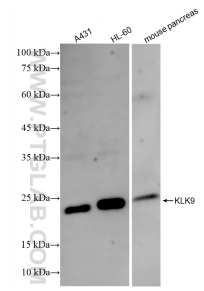
E: [Proteintech-CN@ptglab.com](mailto:Proteintech-CN@ptglab.com)

W: [ptgcn.com](http://ptgcn.com)

**This product is exclusively available under Proteintech Group brand and is not available to purchase from any other manufacturer.**



## Selected Validation Data



Various lysates were subjected to SDS PAGE followed by western blot with 86149-1-RR (KLK9 antibody) at dilution of 1:5000 incubated at room temperature for 1.5 hours. This data was developed using the same antibody clone with 86149-1-PBS in a different storage buffer formulation.