

Basic Information

| | | |
|--|--|--|
| Catalog Number: 86143-1-RR | GenBank Accession Number: NM_001320331.1 | Purification Method: Protein A purification |
| Source: Rabbit | GeneID (NCBI): 16612 | CloneNo.: 250034D2 |
| Isotype: IgG | UNIPROT ID: P15947 | Recommended Dilutions: WB: 1:2000-1:10000 IHC: 1:500-1:2000 IF-P: 1:50-1:500 |
| Immunogen Catalog Number: EG2996 | Full Name: kallikrein 1 | |
| | Calculated MW: 29 kDa | |
| | Observed MW: 28-34 kDa | |

Applications

| | |
|--|--------------------------------------|
| Tested Applications: WB, IHC, IF-P, ELISA | Positive Controls: |
| Species Specificity: mouse | WB : mouse pancreas tissue, |
| Note-IHC: suggested antigen retrieval with TE buffer pH 9.0; (*) Alternatively, antigen retrieval may be performed with citrate buffer pH 6.0 | IHC : mouse pancreas tissue, |
| | IF-P : mouse pancreas tissue, |

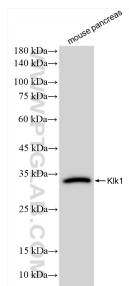
Background Information

Mouse KLK1 (Kallikrein-Related Peptidase 1) is a serine protease belonging to the kallikrein family with important physiological functions. KLK1 can cleave the Met-Lys and Arg-Ser bonds in kininogen to release Lys-bradykinin. Bradykinin plays an important role in regulating vasodilation, lowering blood pressure, smooth muscle relaxation and contraction, pain induction and inflammatory response.

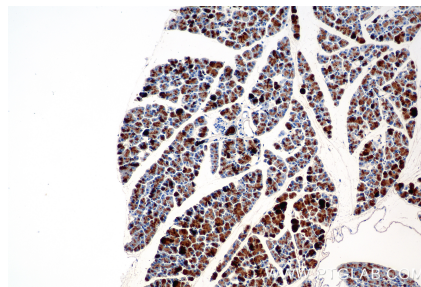
Storage

Storage:
Store at -20°C. Stable for one year after shipment.
Storage Buffer:
PBS with 0.02% sodium azide and 50% glycerol, pH7.3
Aliquoting is unnecessary for -20°C storage

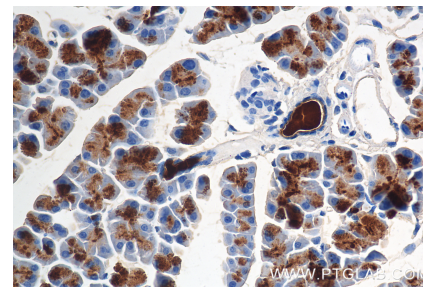
Selected Validation Data



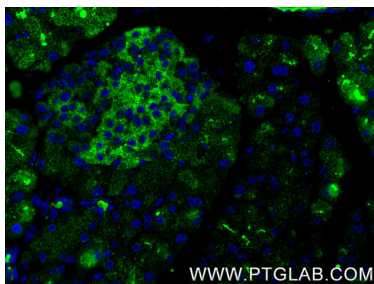
mouse pancreas tissue were subjected to SDS PAGE followed by western blot with 86143-1-RR (Klk1 antibody) at dilution of 1:5000 incubated at room temperature for 1.5 hours.



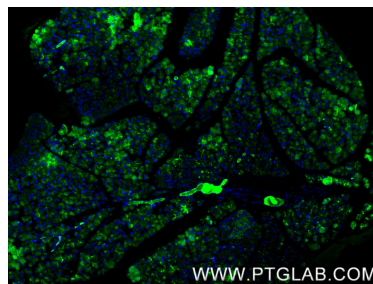
Immunohistochemical analysis of paraffin-embedded mouse pancreas tissue slide using 86143-1-RR (Klk1 antibody) at dilution of 1:1000 (under 10x lens). Heat mediated antigen retrieval with Tris-EDTA buffer (pH 9.0).



Immunohistochemical analysis of paraffin-embedded mouse pancreas tissue slide using 86143-1-RR (Klk1 antibody) at dilution of 1:1000 (under 40x lens). Heat mediated antigen retrieval with Tris-EDTA buffer (pH 9.0).



Immunofluorescent analysis of (4% PFA) fixed paraffin-embedded mouse pancreas tissue using Klk1 antibody (86143-1-RR, Clone: 250034D2) at dilution of 1:200 and CoraLite®488-Conjugated Goat Anti-Rabbit IgG(H+L) (SA00013-2). Heat mediated antigen retrieval with Tris-EDTA buffer (pH 9.0).



Immunofluorescent analysis of (4% PFA) fixed paraffin-embedded mouse pancreas tissue using Klk1 antibody (86143-1-RR, Clone: 250034D2) at dilution of 1:200 and CoraLite®488-Conjugated Goat Anti-Rabbit IgG(H+L) (SA00013-2). Heat mediated antigen retrieval with Tris-EDTA buffer (pH 9.0).