

For Research Use Only

REL Recombinant antibody, PBS Only (Capture)

Catalog Number: 86140-3-PBS



Basic Information

Catalog Number:

86140-3-PBS

Concentration:

1 mg/ml

Source:

Rabbit

Isotype:

IgG

Immunogen Catalog Number:

AG26803

GenBank Accession Number:

NM_001291746

GeneID (NCBI):

5966

UNIPROT ID:

Q04864

Full Name:

v-rel reticuloendotheliosis viral
oncogene homolog (avian)

Calculated MW:

69 kDa

Purification Method:

Protein A purification

CloneNo.:

250180G8

Applications

Tested Applications:

Cytometric bead array, Indirect ELISA, Sample test

Species Specificity:

human

Background Information

Storage

Storage:

Store at -80°C.

The product is shipped with ice packs. Upon receipt, store it immediately at -80°C

Storage Buffer:

PBS only, pH7.3

For technical support and original validation data for this product please contact:

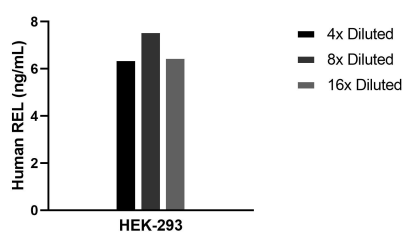
T: 4006900926

E: Proteintech-CN@ptglab.com

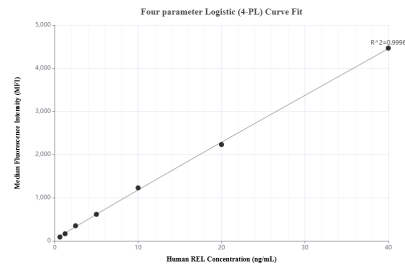
W: ptgcn.com

This product is exclusively available under Proteintech Group brand and is not available to purchase from any other manufacturer.

Selected Validation Data



The mean REL concentration was determined to be 6.8 ng/mL in HEK-293 cell extract based on a 2.6 mg/mL extract load.



Cytometric bead array standard curve of MP02354-1, REL Recombinant Matched Antibody Pair, PBS Only. Capture antibody: 86140-3-PBS. Detection antibody: 86140-2-PBS. Standard: Ag26803. Range: 0.625-40 ng/mL.