

For Research Use Only

# REL Recombinant antibody, PBS Only (Detector)

Catalog Number: 86140-2-PBS



## Basic Information

Catalog Number:

86140-2-PBS

Concentration:

1 mg/ml

Source:

Rabbit

Isotype:

IgG

Immunogen Catalog Number:

AG26803

GenBank Accession Number:

NM\_001291746

GeneID (NCBI):

5966

UNIPROT ID:

Q04864

Full Name:

v-rel reticuloendotheliosis viral  
oncogene homolog (avian)

Calculated MW:

69 kDa

Purification Method:

Protein A purification

CloneNo.:

250180D6

## Applications

Tested Applications:

Cytometric bead array, Indirect ELISA, Sample test

Species Specificity:

human

## Background Information

### Storage

Storage:

Store at -80°C.

The product is shipped with ice packs. Upon receipt, store it immediately at -80°C

Storage Buffer:

PBS only, pH7.3

For technical support and original validation data for this product please contact:

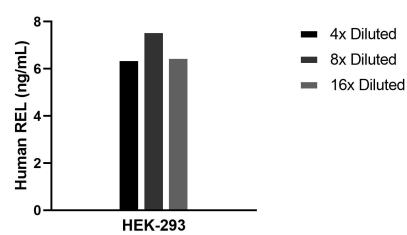
T: 4006900926

E: Proteintech-CN@ptglab.com

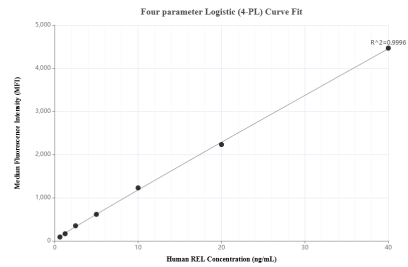
W: ptgcn.com

This product is exclusively available under Proteintech Group brand and is not available to purchase from any other manufacturer.

## Selected Validation Data



The mean REL concentration was determined to be 6.8 ng/mL in HEK-293 cell extract based on a 2.6 mg/mL extract load.



Cytometric bead array standard curve of MP02354-1, REL Recombinant Matched Antibody Pair, PBS Only. Capture antibody: 86140-3-PBS. Detection antibody: 86140-2-PBS. Standard: Ag26803. Range: 0.625-40 ng/mL.