

For Research Use Only

REL Recombinant antibody

Catalog Number: 86140-1-RR



Basic Information

Catalog Number:

86140-1-RR

Concentration:

1000 µg/ml

Source:

Rabbit

Isotype:

IgG

Immunogen Catalog Number:

AG26803

GenBank Accession Number:

NM_001291746

GeneID (NCBI):

5966

UNIPROT ID:

Q04864

Full Name:

v-rel reticuloendotheliosis viral
oncogene homolog (avian)

Calculated MW:

69 kDa

Observed MW:

68-78 kDa

Purification Method:

Protein A purification

CloneNo.:

250180A1

Recommended Dilutions:

WB: 1:1000-1:6000

Applications

Tested Applications:

WB, ELISA

Species Specificity:

human

Positive Controls:

WB : Daudi cells, Jurkat cells, MOLT-4 cells, Raji cells

Background Information

REL, also known as, Proto-oncogene c-Rel, is a 619 amino acid protein, which may play a role in differentiation and lymphopoiesis. NF-kappa-B is a homo- or heterodimeric complex formed by the Rel-like domain-containing proteins RELA/p65, RELB, NFKB1/p105, NFKB1/p50, REL and NFKB2/p52. The NF-kappa-B heterodimer RELA/p65-c-Rel is a transcriptional activator.

Storage

Storage:

Store at -20°C. Stable for one year after shipment.

Storage Buffer:

PBS with 0.02% sodium azide and 50% glycerol, pH7.3

Aliquoting is unnecessary for -20°C storage

For technical support and original validation data for this product please contact:

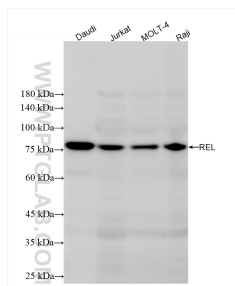
T: 4006900926

E: Proteintech-CN@ptglab.com

W: ptgcn.com

This product is exclusively available under Proteintech Group brand and is not available to purchase from any other manufacturer.

Selected Validation Data



Daudi cells were subjected to SDS PAGE followed by western blot with 86140-1-RR (REL antibody) at dilution of 1:3000 incubated at room temperature for 1.5 hours.