

For Research Use Only

# COL2A1 Recombinant antibody, PBS Only (Detector)

Catalog Number: 86139-3-PBS



## Basic Information

Catalog Number:

86139-3-PBS

Concentration:

1 mg/ml

Source:

Rabbit

Isotype:

IgG

Immunogen Catalog Number:

AG29265

GenBank Accession Number:

BC007252

GeneID (NCBI):

1280

UNIPROT ID:

P02458

Full Name:

collagen, type II, alpha 1

Calculated MW:

134 kDa

Purification Method:

Protein A purification

CloneNo.:

250506G4

## Applications

Tested Applications:

Sandwich ELISA, Indirect ELISA, Sample test

Species Specificity:

human

## Background Information

### Storage

Storage:

Store at -80°C.

The product is shipped with ice packs. Upon receipt, store it immediately at -80°C

Storage Buffer:

PBS only, pH7.3

For technical support and original validation data for this product please contact:

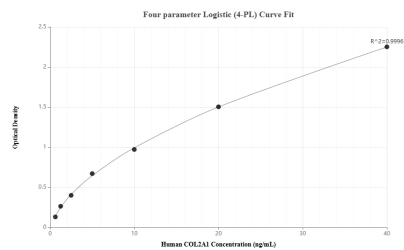
T: 4006900926

E: [Proteintech-CN@ptglab.com](mailto:Proteintech-CN@ptglab.com)

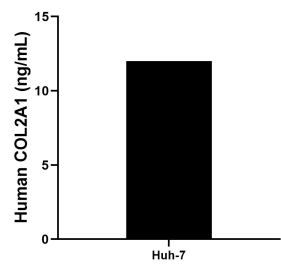
W: [ptgcn.com](http://ptgcn.com)

This product is exclusively available under Proteintech Group brand and is not available to purchase from any other manufacturer.

## Selected Validation Data



Sandwich ELISA standard curve of MP02337-1, Human COL2A1 Recombinant Matched Antibody Pair - PBS only. 86139-4-PBS was coated to a plate as the capture antibody and incubated with serial dilutions of standard Ag29265. 86139-3-PBS was HRP conjugated as the detection antibody. Range: 0.625-40 ng/mL



The mean COL2A1 concentration was determined to be 12.00 ng/mL in Huh-7 cell extract based on a 1.4 mg/mL extract load.