

For Research Use Only

Collagen Type II Recombinant antibody, PBS Only

Catalog Number: 86139-2-PBS



Basic Information

Catalog Number:

86139-2-PBS

Concentration:

1 mg/ml

Source:

Rabbit

Isotype:

IgG

Immunogen Catalog Number:

AG29265

GenBank Accession Number:

BC007252

GeneID (NCBI):

1280

UNIPROT ID:

P02458

Full Name:

collagen, type II, alpha 1

Calculated MW:

134 kDa

Observed MW:

200 kDa

Purification Method:

Protein A purification

CloneNo.:

250506B7

Applications

Tested Applications:

WB, Indirect ELISA

Species Specificity:

human

Background Information

The COL2A1 gene encodes the alpha-1 chain of type II collagen, a fibrillar collagen found primarily in cartilage and the vitreous humor of the eye. Type II collagen is essential for the formation of the extracellular matrix in cartilage and other connective tissues, providing structure and strength to these tissues.

Storage

Storage:

Store at -80°C.

The product is shipped with ice packs. Upon receipt, store it immediately at -80°C

Storage Buffer:

PBS only, pH7.3

For technical support and original validation data for this product please contact:

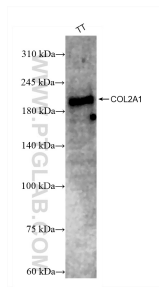
T: 4006900926

E: Proteintech-CN@ptglab.com

W: ptgcn.com

This product is exclusively available under Proteintech Group brand and is not available to purchase from any other manufacturer.

Selected Validation Data



TT cells were subjected to SDS PAGE followed by western blot with 86139-2-RR (COL2A1 antibody) at dilution of 1:5000 incubated at room temperature for 1.5 hours. This data was developed using the same antibody clone with 86139-2-PBS in a different storage buffer formulation.