

SPINT1/HAI-1 Recombinant antibody

Catalog Number: 86138-1-RR

Basic Information

Catalog Number:	86138-1-RR	GenBank Accession Number:	NM_181642.2	Purification Method:	Protein A purification
Concentration:	1000 µg/ml	GeneID (NCBI):	6692	CloneNo.:	250560F1
Source:	Rabbit	UNIPROT ID:	O43278-1	Recommended Dilutions:	WB: 1:2000-1:10000
Isotype:	IgG	Full Name:	serine peptidase inhibitor, Kunitz type 1		
Immunogen Catalog Number:	EG3131	Calculated MW:	58 kDa		
		Observed MW:	58-70 kDa		

Applications

Tested Applications:	WB, ELISA	Positive Controls:	WB: T-47D cells, MCF-7 cells, mouse small intestine tissue, mouse colon tissue, Daudi cells, human placenta
Species Specificity:	human, mouse		

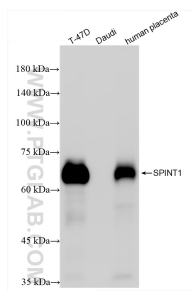
Background Information

Hepatocyte growth factor activator inhibitor type 1 (HAI-1) is also named as SPINT1 and Kunitz-type protease inhibitor 1. HAI-1 is critical to control matriptase proteolytic activity (PMID: 25310042). HAI-1 inhibits matriptase activity through forming complex with activated matriptase (PMID: 30370662). matriptase, HAI - 1 also binds to and inhibits a variety of serine proteases including of hepsin, plasmin, prostasin, TMPRSS13 and HAT. HAI-1 as a cell-autonomous tumor suppressor that negatively regulates the HGF pathway (PMID: 25925948). HAI-1 is inhibitor of HGFAC (PMID: 9045658). HAI-1 inhibits serine protease activity of ST14/matriptase in vitro (PMID: 28710277). HAI-1 inhibits serine protease activity of TMPRSS13, via the BPTI/Kunitz inhibitor 1 domain (PMID: 20977675). HAI-1 expression is reduced in many cancer types, which is implicated in the progression of cancer and is associated with a worse prognosis in cancer patients (PMID: 30370662).

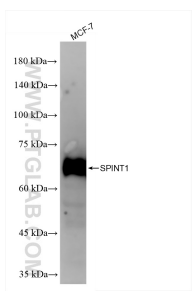
Storage

Storage:
Store at -20°C. Stable for one year after shipment.
Storage Buffer:
PBS with 0.02% sodium azide and 50% glycerol, pH7.3
Aliquoting is unnecessary for -20°C storage

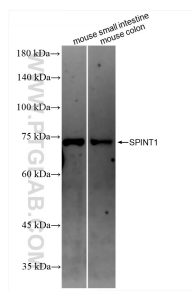
Selected Validation Data



Various lysates were subjected to SDS PAGE followed by western blot with 86138-1-RR (SPINT1 antibody) at dilution of 1:5000 incubated at room temperature for 1.5 hours.



MCF-7 cells were subjected to SDS PAGE followed by western blot with 86138-1-RR (SPINT1 antibody) at dilution of 1:5000 incubated at room temperature for 1.5 hours.



Various lysates were subjected to SDS PAGE followed by western blot with 86138-1-RR (SPINT1 antibody) at dilution of 1:5000 incubated at room temperature for 1.5 hours.