

For Research Use Only

# BTNL2 Recombinant antibody, PBS Only (Capture)

Catalog Number: 86137-2-PBS



## Basic Information

<b>Catalog Number:</b> 86137-2-PBS	<b>GenBank Accession Number:</b> BC127642	<b>Purification Method:</b> Protein A purification
<b>Concentration:</b> 1 mg/ml	<b>GeneID (NCBI):</b> 56244	<b>CloneNo.:</b> 250562C12
<b>Source:</b> Rabbit	<b>UNIPROT ID:</b> Q9UIRO	
<b>Isotype:</b> IgG	<b>Full Name:</b> butyrophilin-like 2 (MHC class II associated)	
<b>Immunogen Catalog Number:</b> AG18803	<b>Calculated MW:</b> 455 aa, 50 kDa	

## Applications

**Tested Applications:**  
Sandwich ELISA, Indirect ELISA, Sample test

**Species Specificity:**  
human

## Background Information

### Storage

**Storage:**  
Store at -80°C.  
**The product is shipped with ice packs. Upon receipt, store it immediately at -80°C**

**Storage Buffer:**  
PBS only, pH7.3

For technical support and original validation data for this product please contact:

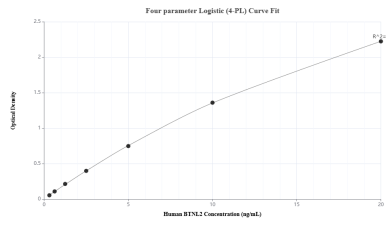
T: 4006900926

E: [Proteintech-CN@ptglab.com](mailto:Proteintech-CN@ptglab.com)

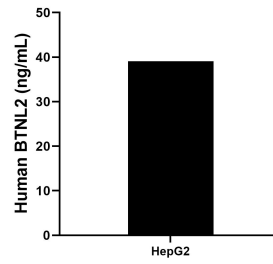
W: [ptgcn.com](http://ptgcn.com)

**This product is exclusively available under Proteintech Group brand and is not available to purchase from any other manufacturer.**

## Selected Validation Data



Sandwich ELISA standard curve of MP02518-1, Human BTNL2 Recombinant Matched Antibody Pair - PBS only. 86137-2-PBS was coated to a plate as the capture antibody and incubated with serial dilutions of standard Ag18803. 86137-3-PBS was HRP conjugated as the detection antibody. Range: 0.313-20 ng/mL



The mean BTNL2 concentration was determined to be 39.10 ng/mL in HeLa cell extract based on a 1.1 mg/mL extract load.