

RRM1 Recombinant antibody

Catalog Number: 86135-1-RR

Basic Information

Catalog Number:

86135-1-RR

Concentration:

1000 µg/ml

Source:

Rabbit

Isotype:

IgG

Immunogen Catalog Number:

AG0789

GenBank Accession Number:

BC006498

GeneID (NCBI):

6240

UNIPROT ID:

P23921

Full Name:

ribonucleotide reductase M1

Calculated MW:

90 kDa

Observed MW:

90 kDa

Purification Method:

Protein A purification

CloneNo.:

250707E6

Recommended Dilutions:

WB: 1:2000-1:10000

IF/ICC: 1:200-1:800

Applications

Tested Applications:

WB, IF/ICC, ELISA

Species Specificity:

human

Positive Controls:

WB : HeLa cells, A431 cells, HEK-293 cells, K-562 cells, A549 cells

IF/ICC : HeLa cells,

Background Information

Ribonucleoside-diphosphate reductase functions as a heterodimer of a large and a small subunits in deoxyribonucleotide synthesis. RRM1 constitutes to the large subunit (R1) of ribonucleotide reductase, and it can either form heterodimer with small subunit RRM or RRM2B(PMID:16376858). RRM1 provides the precursors necessary for DNA synthesis. RRM1 can not be detected in quiescent cells, while its mRNA and protein are present throughout the cell cycle in cycling cells(PMID:8188248). Researches showed that RRM1 is involved in carcinogenesis, tumor progression, and the resistance of non-small-cell lung cancer (NSCLC) to treatment. Low level expression of RRM1 in NSCLC is associated with poor survival (PMID:17314339).

Storage

Storage:

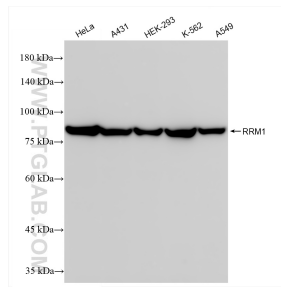
Store at -20°C. Stable for one year after shipment.

Storage Buffer:

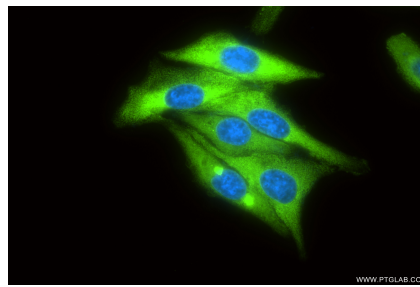
PBS with 0.02% sodium azide and 50% glycerol, pH7.3

Aliquoting is unnecessary for -20°C storage

Selected Validation Data



Various lysates were subjected to SDS PAGE followed by western blot with 86135-1-RR (RRM1 antibody) at dilution of 1:5000 incubated at room temperature for 1.5 hours.



Immunofluorescent analysis of (-20°C Ethanol) fixed HeLa cells using RRM1 antibody (86135-1-RR, Clone: 250707E6) at dilution of 1:400 and CoraLite® 488-Conjugated Goat Anti-Rabbit IgG(H+L) (SA00013-2).