

For Research Use Only

RAD23A Recombinant antibody, PBS Only

Catalog Number: 86132-1-PBS



Basic Information

Catalog Number: 86132-1-PBS	GenBank Accession Number: BC014026	Purification Method: Protein A purification
Concentration: 1 mg/ml	GeneID (NCBI): 5886	CloneNo.: 250716C7
Source: Rabbit	UNIPROT ID: P54725	
Isotype: IgG	Full Name: RAD23 homolog A (S. cerevisiae)	
Immunogen Catalog Number: AG0716	Calculated MW: 40 kDa	
	Observed MW: 55 kDa	

Applications

Tested Applications:
WB, Indirect ELISA

Species Specificity:
human, mouse, rat

Background Information

RAD23A, also named as HHR23A, belongs to the RAD23 family. It is a multiubiquitin chain receptor involved in modulation of proteasomal degradation. RAD23A binds to 'Lys-48'-linked polyubiquitin chains in a length-dependent manner and with a lower affinity to 'Lys-63'-linked polyubiquitin chains. It is proposed to be capable to bind simultaneously to the 26S proteasome and to polyubiquitinated substrates and to deliver ubiquitinated proteins to the proteasome. It is involved in nucleotide excision repair and is thought to be functional equivalent for RAD23B in global genome nucleotide excision repair (GG-NER) by association with XPC. In vitro, the XPC:RAD23A dimer has NER activity. Can stabilize XPC. It is also involved in vpr-dependent replication of HIV-1 in non-proliferating cells and primary macrophages and is required for the association of HIV-1 vpr with the host proteasome.

Storage

Storage:
Store at -80°C.
The product is shipped with ice packs. Upon receipt, store it immediately at -80°C
Storage Buffer:
PBS only, pH7.3

For technical support and original validation data for this product please contact:

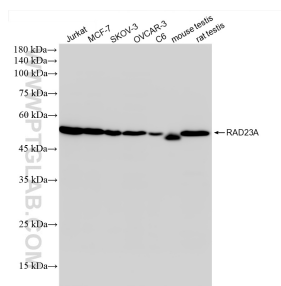
T: 4006900926

E: Proteintech-CN@ptglab.com

W: ptgcn.com

This product is exclusively available under Proteintech Group brand and is not available to purchase from any other manufacturer.

Selected Validation Data



Various cell lysates were subjected to SDS PAGE followed by western blot with 86132-1-RR (RAD23A antibody) at dilution of 1:10000 incubated at room temperature for 1.5 hours. This data was developed using the same antibody clone with 86132-1-PBS in a different storage buffer formulation.