

For Research Use Only

Mouse CD22 Recombinant antibody, PBS Only

Catalog Number: 86128-2-PBS



Basic Information

Catalog Number: 86128-2-PBS	GenBank Accession Number: NM_001043317.2	Purification Method: Protein A purification
Concentration: 1 mg/ml	GeneID (NCBI): 12483	CloneNo.: 250078E8
Source: Rabbit	UNIPROT ID: P35329-1	
Isotype: IgG	Full Name: CD22 antigen	
Immunogen Catalog Number: EG1324	Calculated MW: 97kDa	

Applications

Tested Applications:
IF/ICC, Indirect ELISA
Species Specificity:
mouse

Background Information

CD22, also known as Siglec-2 (sialic acid binding Ig-like lectin 2) or BL-CAM (B-lymphocyte cell adhesion molecule), is a 130-140 kDa, B-cell restricted, type I transmembrane glycoprotein belonging to the immunoglobulin gene superfamily. The expression of CD22 is developmentally regulated. It is expressed at low levels in the cytoplasm of pro-B and pre-B cells and present on the cell surface only at mature stages of B-cell differentiation. Cell surface expression is lost during terminal differentiation into plasma cell and after B-cell activation. CD22 is an inhibitory receptor for B-cell receptor (BCR) signalling, preferentially binds to alpha-2,6-linked sialic acid and mediates B-cell B-cell interactions. It plays a crucial role in activation and differentiation of the B-cell.

Storage

Storage:
Store at -80°C.
The product is shipped with ice packs. Upon receipt, store it immediately at -80°C
Storage Buffer:
PBS only, pH7.3

For technical support and original validation data for this product please contact:

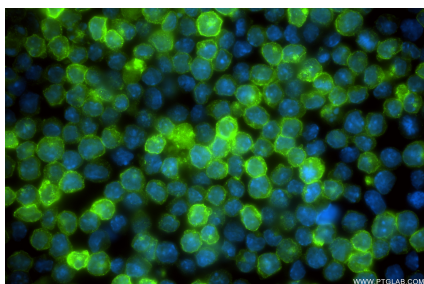
T: 4006900926

E: Proteintech-CN@ptglab.com

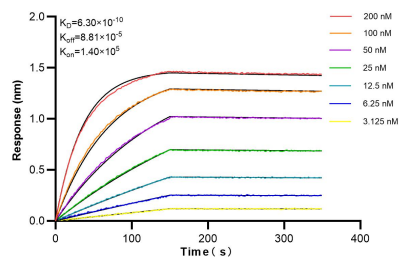
W: ptgcn.com

This product is exclusively available under Proteintech Group brand and is not available to purchase from any other manufacturer.

Selected Validation Data



Immunofluorescent analysis of (4% PFA) fixed A20 cells using CD22 antibody (86128-2-RR, Clone: 250078E8) at dilution of 1:200 and CoraLite® 488-Conjugated Goat Anti-Rabbit IgG(H+L) (SA00013-2). This data was developed using the same antibody clone with 86128-2-PBS in a different storage buffer formulation.



Biolayer interferometry (BLI) kinetic assays of 86128-2-RR against Human CD22 were performed. The affinity constant is 0.63 nM.