

For Research Use Only

# NRP2 Recombinant antibody, PBS Only (Capture)

Catalog Number: 86126-2-PBS



## Basic Information

Catalog Number:

86126-2-PBS

Concentration:

1 mg/ml

Source:

Rabbit

Isotype:

IgG

Immunogen Catalog Number:

EG3125

GenBank Accession Number:

NM\_201266.1

GeneID (NCBI):

8828

UNIPROT ID:

O60462-1

Full Name:

neuropilin 2

Calculated MW:

105 kDa

Purification Method:

Protein A purification

CloneNo.:

250688B8

## Applications

Tested Applications:

Cytometric bead array, Sandwich ELISA, Indirect ELISA, Sample test

Species Specificity:

human

## Background Information

### Storage

Storage:

Store at -80°C.

**The product is shipped with ice packs. Upon receipt, store it immediately at -80°C**

Storage Buffer:

PBS only, pH7.3

For technical support and original validation data for this product please contact:

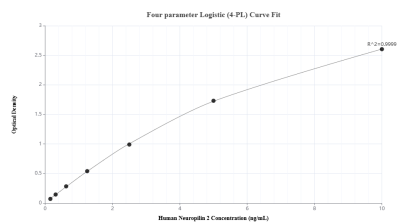
T: 4006900926

E: [Proteintech-CN@ptglab.com](mailto:Proteintech-CN@ptglab.com)

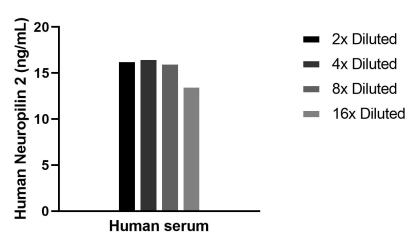
W: [ptgcn.com](http://ptgcn.com)

**This product is exclusively available under Proteintech Group brand and is not available to purchase from any other manufacturer.**

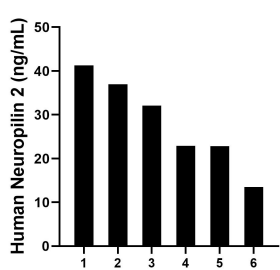
## Selected Validation Data



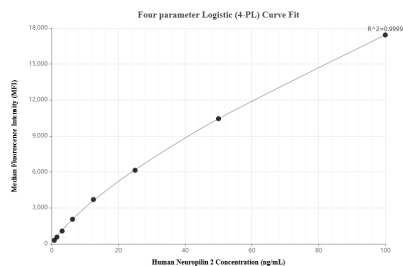
Sandwich ELISA standard curve of MP02281-2, Human Neuropilin 2 Recombinant Matched Antibody Pair - PBS only. 86126-2-PBS was coated to a plate as the capture antibody and incubated with serial dilutions of standard Eg3125. 86126-3-PBS was HRP conjugated as the detection antibody. Range: 0.156-10 ng/mL



The mean Neuropilin 2 concentration was determined to be 15.7 ng/mL in human serum.



Serum of six individual healthy human donors was measured. The human Neuropilin 2 concentration of detected samples was determined to be 28.25 ng/mL with a range of 13.50 - 41.26 ng/mL.



Cytometric bead array standard curve of MP02281-1, Neuropilin 2 Recombinant Matched Antibody Pair, PBS Only. Capture antibody: 86126-2-PBS. Detection antibody: 86126-1-PBS. Standard: Eg3125. Range: 0.781-100 ng/mL