

For Research Use Only

MATN3 Recombinant antibody, PBS Only (Capture)

Catalog Number: 86125-2-PBS



Basic Information

Catalog Number:	86125-2-PBS	GenBank Accession Number:	NM_002381.4	Purification Method:	Protein A purification
Concentration:	1 mg/ml	GeneID (NCBI):	4148	CloneNo.:	250692C3
Source:	Rabbit	UNIPROT ID:	O15232		
Isotype:	IgG	Full Name:	matrilin 3		
Immunogen Catalog Number:	EG3136	Calculated MW:	53 kDa		

Applications

Tested Applications:
Cytometric bead array, Sandwich ELISA, Indirect ELISA, Sample test

Species Specificity:
human

Background Information

Storage

Storage:
Store at -80°C.
The product is shipped with ice packs. Upon receipt, store it immediately at -80°C

Storage Buffer:
PBS only, pH7.3

For technical support and original validation data for this product please contact:

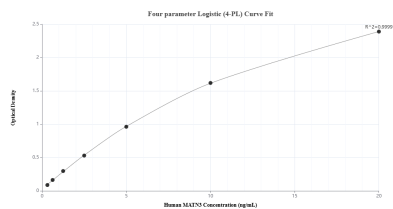
T: 4006900926

E: Proteintech-CN@ptglab.com

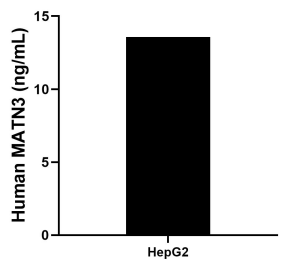
W: ptgcn.com

This product is exclusively available under Proteintech Group brand and is not available to purchase from any other manufacturer.

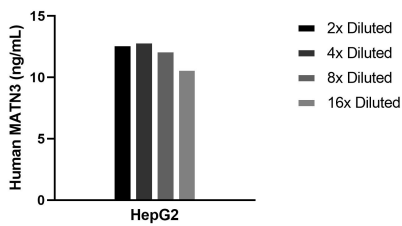
Selected Validation Data



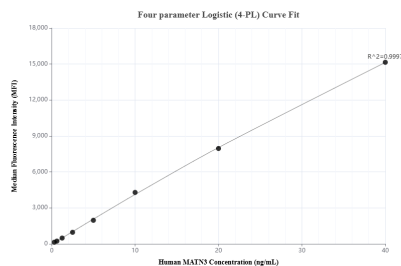
Sandwich ELISA standard curve of MP02278-1, Human MATN3 Recombinant Matched Antibody Pair - PBS only. 86125-2-PBS was coated to a plate as the capture antibody and incubated with serial dilutions of standard Eg3136. 86125-1-PBS was HRP conjugated as the detection antibody. Range: 0.313-20 ng/mL



The mean MATN3 concentration was determined to be 13.57 ng/mL in HepG2 cell extract based on a 0.9 mg/mL extract load.



The mean MATN3 concentration was determined to be 12.1 ng/mL in HepG2 cell extract based on a 0.9 mg/mL extract load.



Cytometric bead array standard curve of MP02278-1, MATN3 Recombinant Matched Antibody Pair, PBS Only. Capture antibody: 86125-2-PBS. Detection antibody: 86125-1-PBS. Standard: Eg3136. Range: 0.313-40 ng/mL